

4

3

2

1

D

D

C

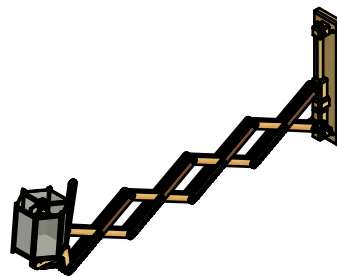
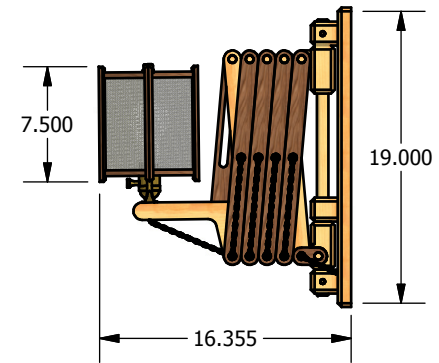
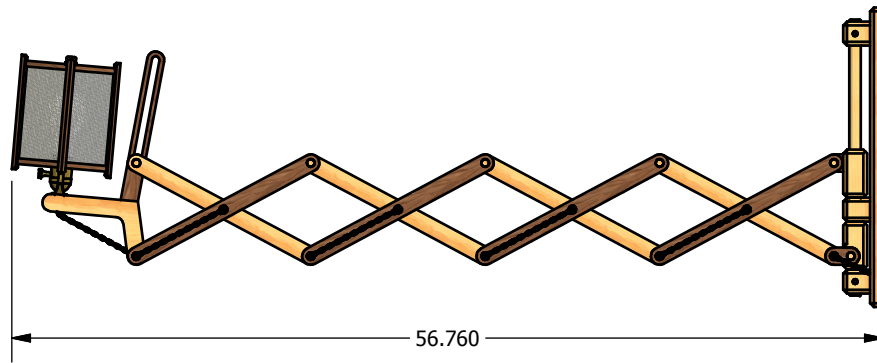
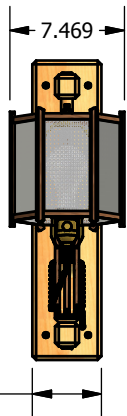
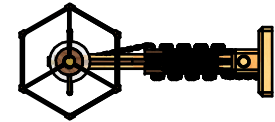
C

B

B

A

A



Woodworker's Journal has arranged with Lars Parrington and Charles Mak, authors of the Accordion Wall Lamp project appearing in the March/April 2014 issue, to make these drawings available as a reference for those readers who choose to build this project.

THIS DOCUMENT CONTAINS PROPRIETARY DATA AND SHOULD NOT BE RELEASED OR DISTRIBUTED WITHOUT THE EXPRESSED WRITTEN APPROVAL OF LAWRENCE PARRINGTON. THIS DOCUMENT CONTAINS PRIVATE OR PRIVILEGED INFORMATION WHICH IS DISCLOSED IN CONFIDENCE. THIS INFORMATION MAY BE USED, DISTRIBUTED OR DISCLOSED ONLY TO THE EXTENT AS SPECIFICALLY AUTHORIZED IN WRITING BY LAWRENCE PARRINGTON.

PROJECT TITLE		SCISSOR LAMP	
PART NAME			
MATERIAL		DATE 6/6/2013	
SHEET 1 OF 1		SCALE 0.08	REV IR

4

3

2

1

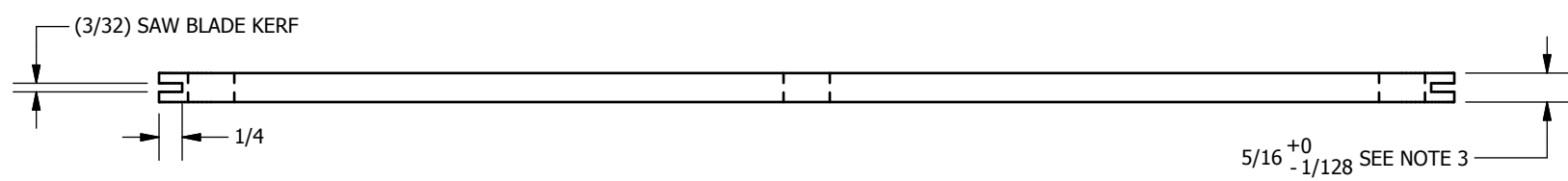
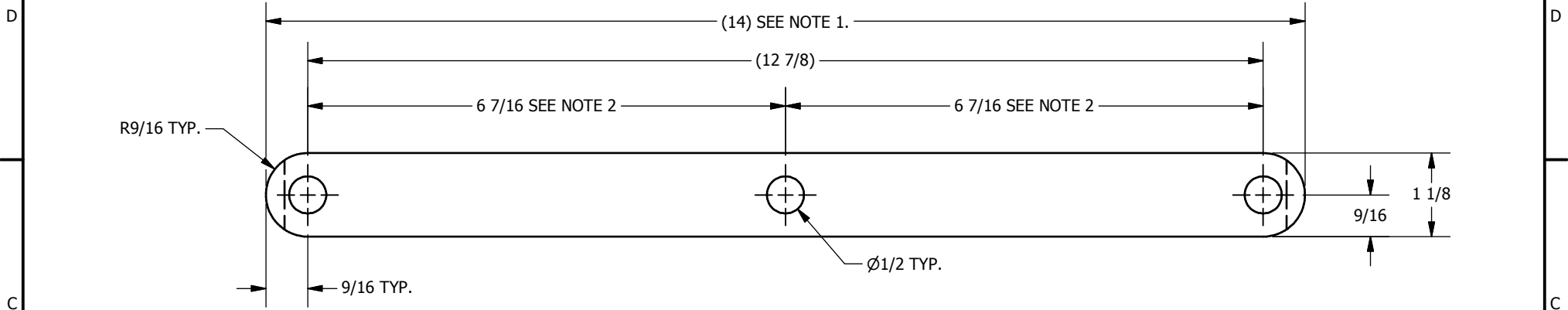


4

3

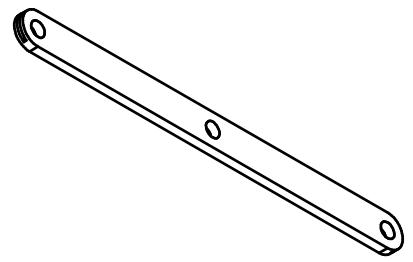
2

1



NOTES:

1. Order of operations is important because glue used for splines will penetrate end grain of strut when wet. Recommended order of operations is as follows:
 - A. Cut extra long by ~1/16"
 - B. Saw kerfs for splines
 - C. Glue splines
 - D. Drill holes
 - E. Round over ends
2. Uniformity of hole spacing is critical to ease of assembly and smooth operation of scissor mechanism.
3. Deviation of strut thickness from listed value will require adjustment of SLIDING BASE BLOCK dimensions.



Woodworker's Journal has arranged with Lars Parrington and Charles Mak, authors of the Accordion Wall Lamp project appearing in the March/April 2014 issue, to make these drawings available as a reference for those readers who choose to build this project.

THIS DOCUMENT CONTAINS PROPRIETARY DATA AND SHOULD NOT BE RELEASED OR DISTRIBUTED WITHOUT THE EXPRESSED WRITTEN APPROVAL OF LAWRENCE PARRINGTON. THIS DOCUMENT CONTAINS PRIVATE OR PRIVILEGED INFORMATION WHICH IS DISCLOSED IN CONFIDENCE. THIS INFORMATION MAY BE USED, DISTRIBUTED OR DISCLOSED ONLY TO THE EXTENT AS SPECIFICALLY AUTHORIZED IN WRITING BY LAWRENCE PARRINGTON.	PROJECT TITLE		
	SCISSOR LAMP		
	PART NAME		
	BASIC STRUT		
MATERIAL	DATE		
MAPLE OR WALNUT	6/6/2013		
SHEET 1 OF 1	SCALE 1:2	REV IR	

4

3

2

1

4

3

2

1

D

D

C

C

B

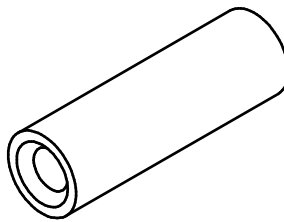
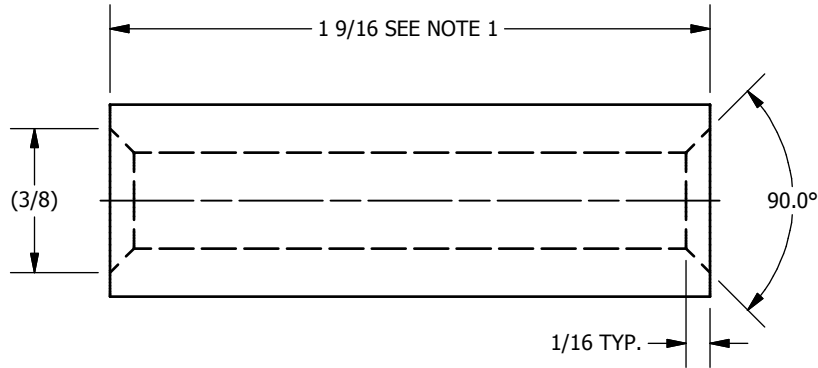
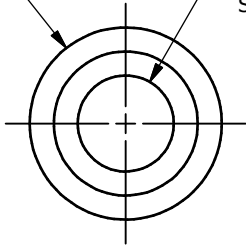
B

A

A

Ø1/2 MAX
SEE NOTE 3

Ø1/4 THRU
SEE NOTE 2



NOTES:

1. Cut pins 1/32" to 1/16" longer than shown and trim to length after assembly.

2. Omit hole to make solid pins.

3. Pins should be a fairly loose fit. Otherwise swelling of pin diameter post assembly due to humidity changes could cause binding which would be difficult to fix.

Woodworker's Journal has arranged with Lars Parrington and Charles Mak, authors of the Accordion Wall Lamp project appearing in the March/April 2014 issue, to make these drawings available as a reference for those readers who choose to build this project.

THIS DOCUMENT CONTAINS PROPRIETARY DATA AND SHOULD NOT BE RELEASED OR DISTRIBUTED WITHOUT THE EXPRESSED WRITTEN APPROVAL OF LAWRENCE PARRINGTON. THIS DOCUMENT CONTAINS PRIVATE OR PRIVILEGED INFORMATION WHICH IS DISCLOSED IN CONFIDENCE. THIS INFORMATION MAY BE USED, DISTRIBUTED OR DISCLOSED ONLY TO THE EXTENT AS SPECIFICALLY AUTHORIZED IN WRITING BY LAWRENCE PARRINGTON.

PROJECT TITLE		
SCISSOR LAMP		
PART NAME		
PIN WITH CORD HOLE		
MATERIAL	DATE	
MAPLE	6/6/2013	
SHEET 1 OF 1	SCALE 2:1	REV IR

4

3

2

1



4

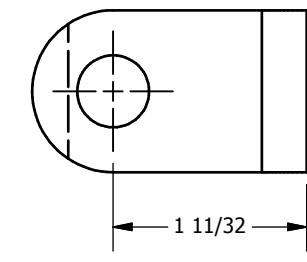
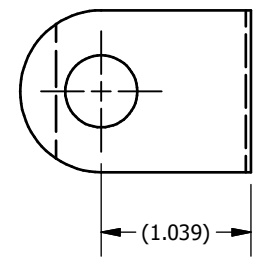
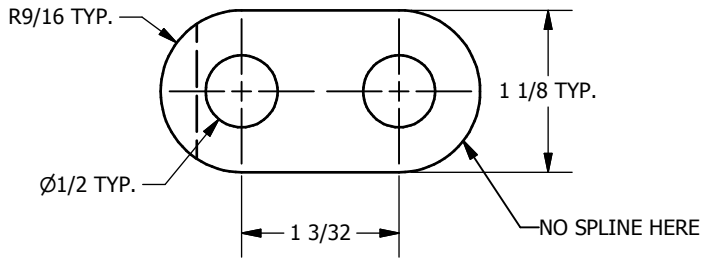
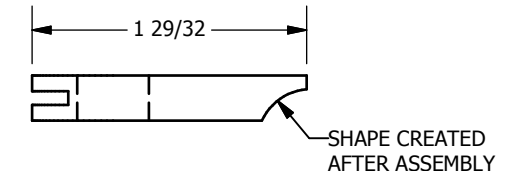
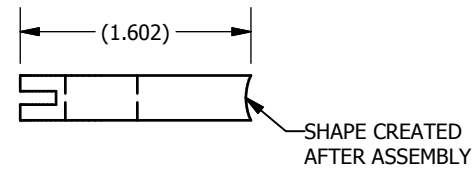
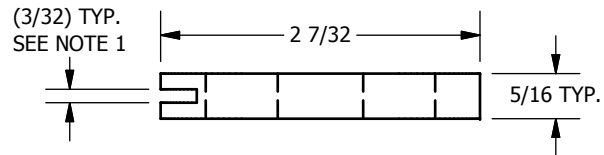
3

2

1

D

D



SHORT STRUT, BOTTOM SIDE

SHORT STRUT, BOTTOM CENTER

SHORT STRUT, TOP

C

C

D

D

B

B

A

A

- NOTES:
1. Refer to BASIC STRUT drawing for notes on cutting spline slots.
 2. See also BOTTOM SLIDING BASE BLOCK and TOP SLIDING BASE BLOCK drawings for assembly notes.

Woodworker's Journal has arranged with Lars Parrington and Charles Mak, authors of the Accordion Wall Lamp project appearing in the March/April 2014 issue, to make these drawings available as a reference for those readers who choose to build this project.

THIS DOCUMENT CONTAINS PROPRIETARY DATA AND SHOULD NOT BE RELEASED OR DISTRIBUTED WITHOUT THE EXPRESSED WRITTEN APPROVAL OF LAWRENCE PARRINGTON. THIS DOCUMENT CONTAINS PRIVATE OR PRIVILEGED INFORMATION WHICH IS DISCLOSED IN CONFIDENCE. THIS INFORMATION MAY BE USED, DISTRIBUTED OR DISCLOSED ONLY TO THE EXTENT AS SPECIFICALLY AUTHORIZED IN WRITING BY LAWRENCE PARRINGTON.

PROJECT TITLE		SCISSOR LAMP	
PART NAME			
SHORT STRUTS		DATE	
MATERIAL		6/6/2013	
WALNUT		REV IR	
SHEET 1 OF 1		SCALE 3:4	REV IR

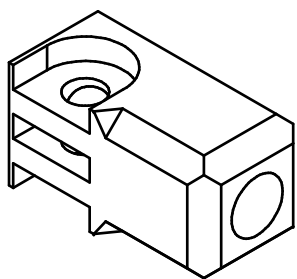
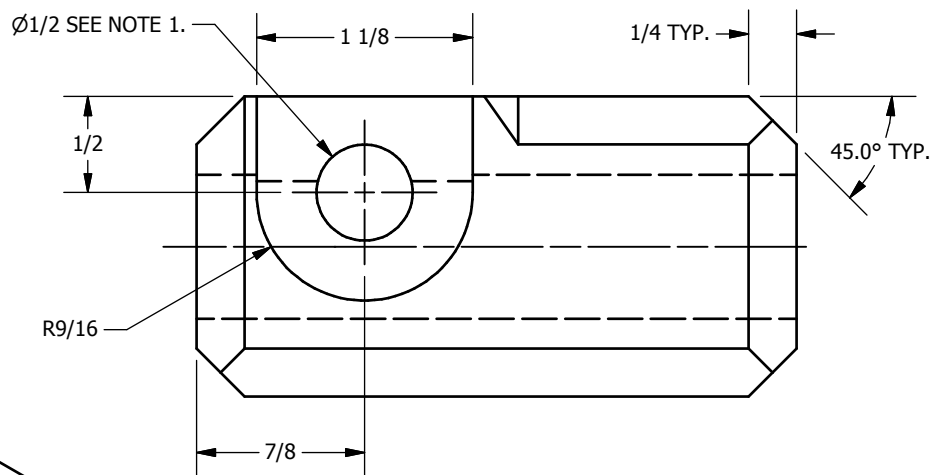
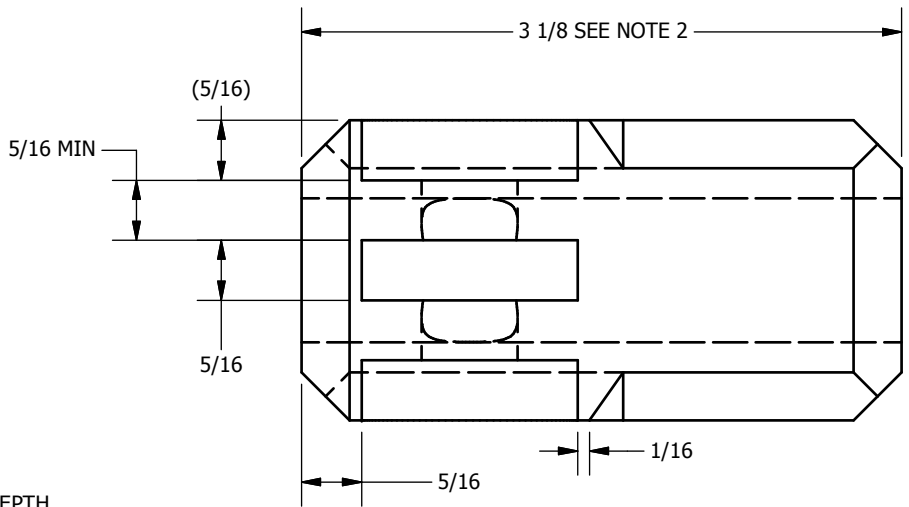
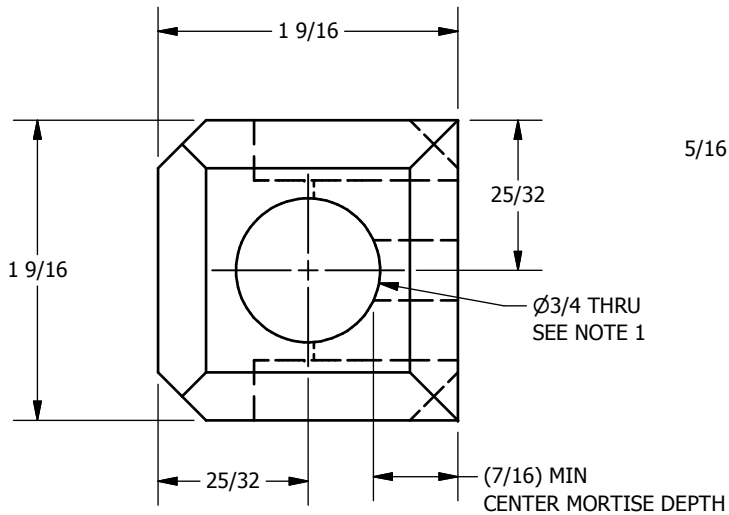
4

3

2

1





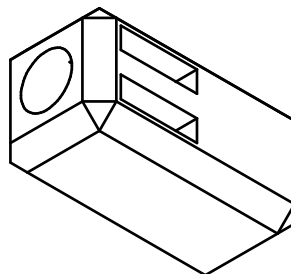
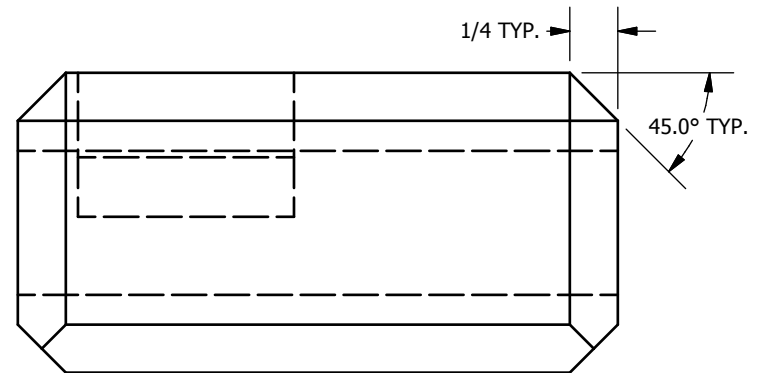
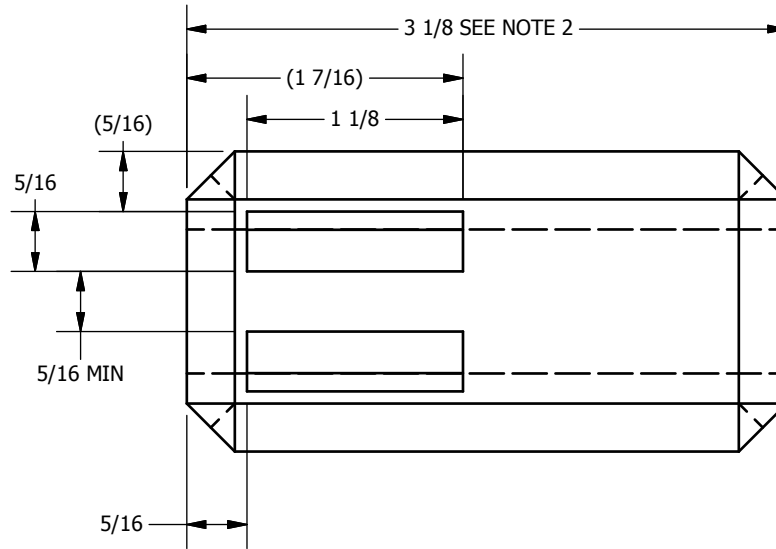
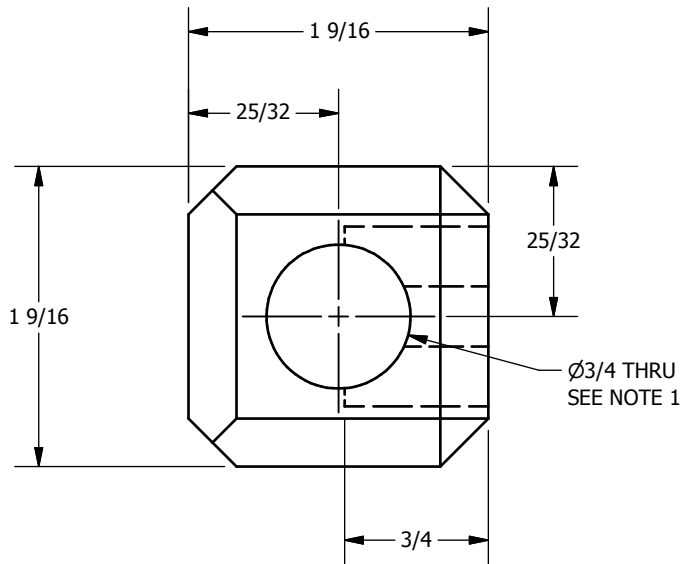
- NOTES:
- Recommended order of operations:
 - Cut center strut mortise
 - Cut side strut cavities
 - Drill for pin halfway from each side
 - Glue and pin side struts using 2 half pins inserted up to, but not into center mortise
 - Clean out center mortise as necessary
 - Glue center strut, using a pin to keep its hole aligned with other two struts
 - Drill large hole for dowel

2. If center mortise will be hand cut, then cut material extra long at first to avoid splitting out the end.

Woodworker's Journal has arranged with Lars Parrington and Charles Mak, authors of the Accordion Wall Lamp project appearing in the March/April 2014 issue, to make these drawings available as a reference for those readers who choose to build this project.

THIS DOCUMENT CONTAINS PROPRIETARY DATA AND SHOULD NOT BE RELEASED OR DISTRIBUTED WITHOUT THE EXPRESSED WRITTEN APPROVAL OF LAWRENCE PARRINGTON. THIS DOCUMENT CONTAINS PRIVATE OR PRIVILEGED INFORMATION WHICH IS DISCLOSED IN CONFIDENCE. THIS INFORMATION MAY BE USED, DISTRIBUTED OR DISCLOSED ONLY TO THE EXTENT AS SPECIFICALLY AUTHORIZED IN WRITING BY LAWRENCE PARRINGTON.

PROJECT TITLE		SCISSOR LAMP	
PART NAME			
BOTTOM SLIDING BASE BLOCK			
MATERIAL	MAPLE	DATE	6/6/2013
SHEET 1 OF 1		SCALE 1:1	REV IR



NOTES:

1. Recommended order of operations:

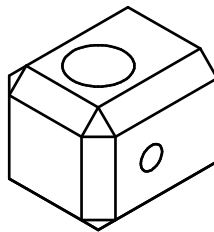
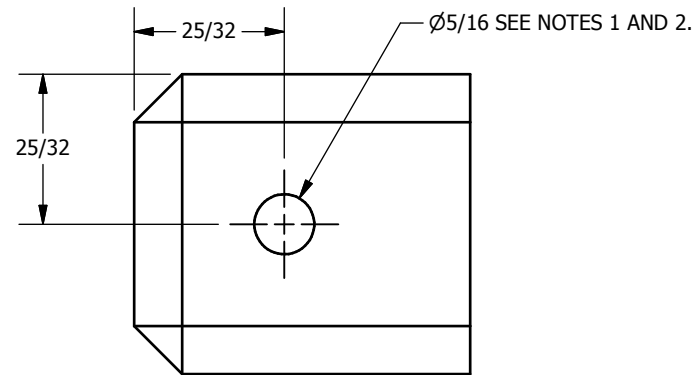
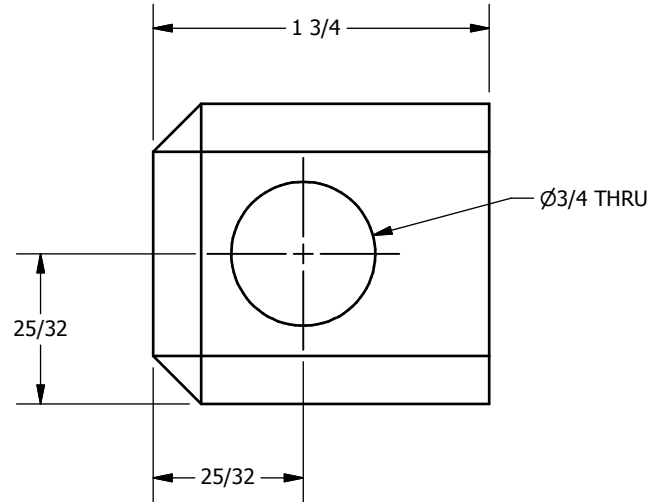
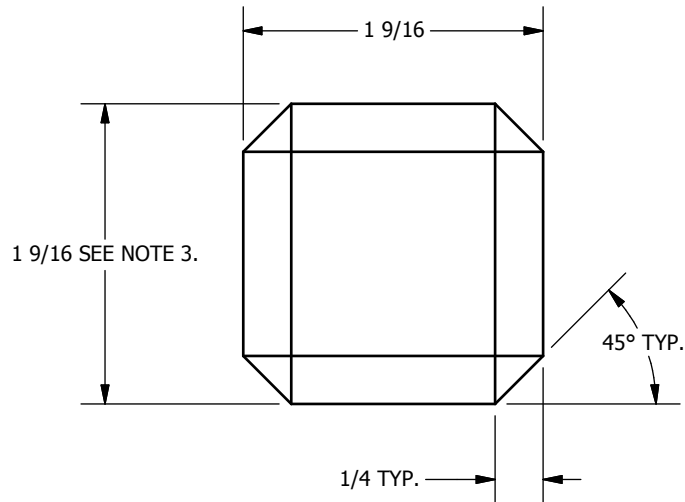
- A. Cut mortises
- B. Cut chamfers
- C. Glue struts, using a pin to keep holes aligned.
- D. Drill large hole for dowel

2. If mortises will be hand cut, then cut material extra long at first to avoid splitting out the end.

Woodworker's Journal has arranged with Lars Parrington and Charles Mak, authors of the Accordion Wall Lamp project appearing in the March/April 2014 issue, to make these drawings available as a reference for those readers who choose to build this project.

THIS DOCUMENT CONTAINS PROPRIETARY DATA AND SHOULD NOT BE RELEASED OR DISTRIBUTED WITHOUT THE EXPRESSED WRITTEN APPROVAL OF LAWRENCE PARRINGTON. THIS DOCUMENT CONTAINS PRIVATE OR PRIVILEGED INFORMATION WHICH IS DISCLOSED IN CONFIDENCE. THIS INFORMATION MAY BE USED, DISTRIBUTED OR DISCLOSED ONLY TO THE EXTENT AS SPECIFICALLY AUTHORIZED IN WRITING BY LAWRENCE PARRINGTON.

PROJECT TITLE		
SCISSOR LAMP		
PART NAME		
TOP SLIDING BASE BLOCK		
MATERIAL	DATE	
MAPLE	6/6/2013	
SHEET 1 OF 1	SCALE 1:1	REV IR



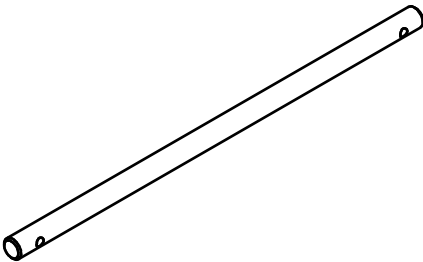
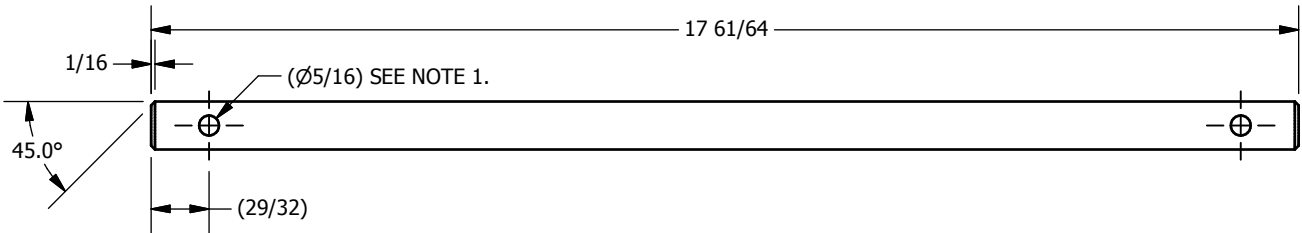
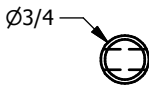
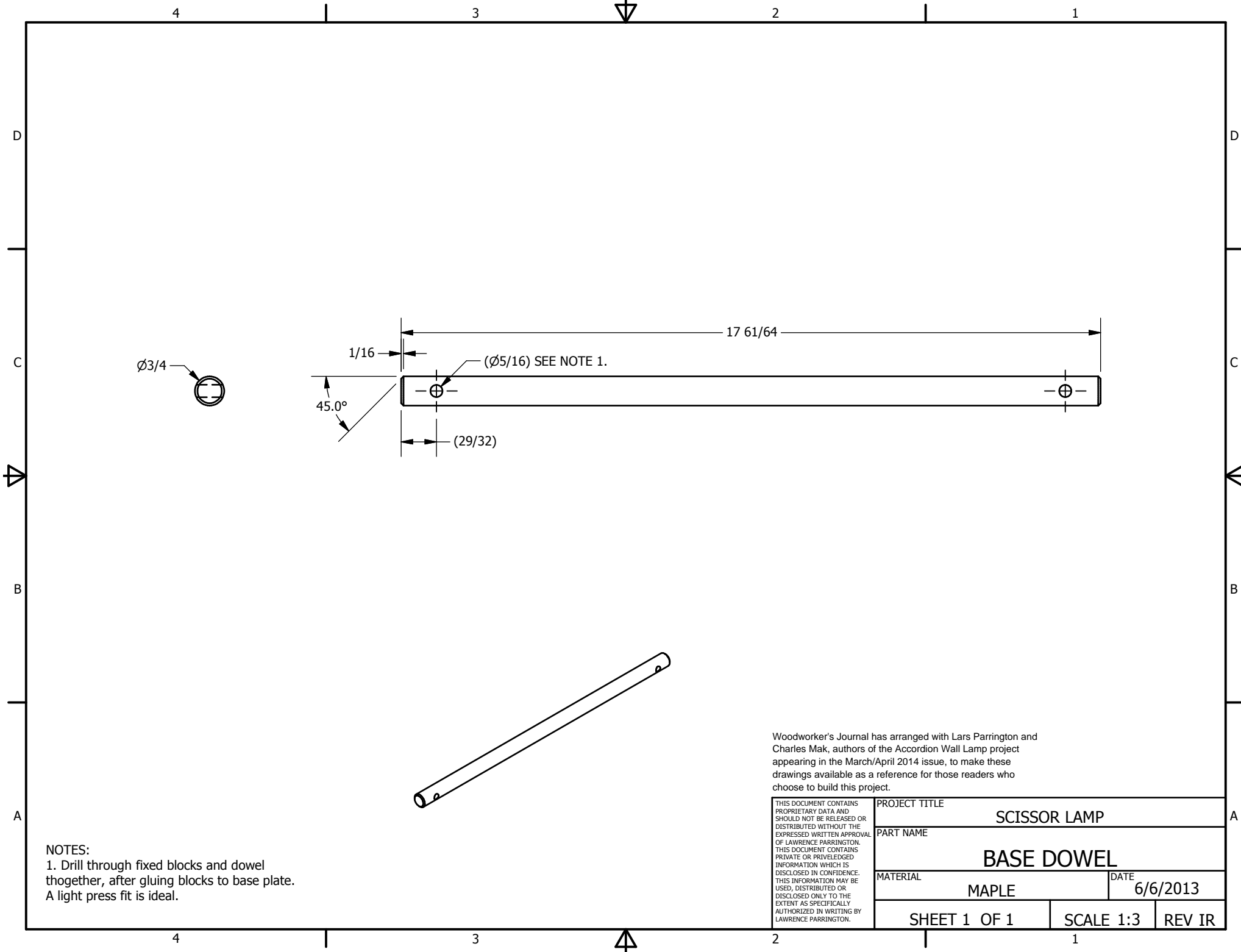
NOTES:

1. Drill through blocks and dowel together, after gluing blocks to base plate. A light press fit is ideal.
2. Center fixed block does not get pin hole.
3. If width of sliding blocks was modified, modify width here to match.

Woodworker's Journal has arranged with Lars Parrington and Charles Mak, authors of the Accordion Wall Lamp project appearing in the March/April 2014 issue, to make these drawings available as a reference for those readers who choose to build this project.

THIS DOCUMENT CONTAINS PROPRIETARY DATA AND SHOULD NOT BE RELEASED OR DISTRIBUTED WITHOUT THE EXPRESSED WRITTEN APPROVAL OF LAWRENCE PARRINGTON. THIS DOCUMENT CONTAINS PRIVATE OR PRIVILEGED INFORMATION WHICH IS DISCLOSED IN CONFIDENCE. THIS INFORMATION MAY BE USED, DISTRIBUTED OR DISCLOSED ONLY TO THE EXTENT AS SPECIFICALLY AUTHORIZED IN WRITING BY LAWRENCE PARRINGTON.

PROJECT TITLE		
SCISSOR LAMP		
PART NAME		
FIXED BASE BLOCK		
MATERIAL	DATE	
MAPLE	6/6/2013	
SHEET 1 OF 1	SCALE 1:1	REV IR



NOTES:
 1. Drill through fixed blocks and dowel together, after gluing blocks to base plate. A light press fit is ideal.

Woodworker's Journal has arranged with Lars Parrington and Charles Mak, authors of the Accordion Wall Lamp project appearing in the March/April 2014 issue, to make these drawings available as a reference for those readers who choose to build this project.

THIS DOCUMENT CONTAINS PROPRIETARY DATA AND SHOULD NOT BE RELEASED OR DISTRIBUTED WITHOUT THE EXPRESSED WRITTEN APPROVAL OF LAWRENCE PARRINGTON. THIS DOCUMENT CONTAINS PRIVATE OR PRIVILEGED INFORMATION WHICH IS DISCLOSED IN CONFIDENCE. THIS INFORMATION MAY BE USED, DISTRIBUTED OR DISCLOSED ONLY TO THE EXTENT AS SPECIFICALLY AUTHORIZED IN WRITING BY LAWRENCE PARRINGTON.

PROJECT TITLE		
SCISSOR LAMP		
PART NAME		
BASE DOWEL		
MATERIAL	DATE	
MAPLE	6/6/2013	
SHEET 1 OF 1	SCALE 1:3	REV IR

4

3

2

1

D

D

C

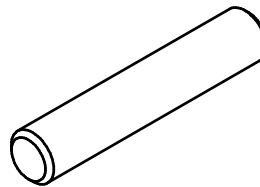
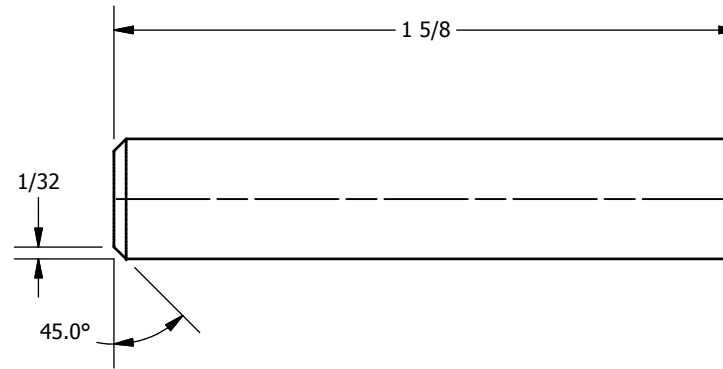
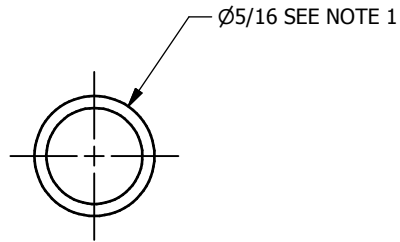
C

B

B

A

A



NOTES:
 1. Size for a light press fit into BASE DOWEL
 and FIXED BASE BLOCKS.

Woodworker's Journal has arranged with Lars Parrington and Charles Mak, authors of the Accordion Wall Lamp project appearing in the March/April 2014 issue, to make these drawings available as a reference for those readers who choose to build this project.

THIS DOCUMENT CONTAINS PROPRIETARY DATA AND SHOULD NOT BE RELEASED OR DISTRIBUTED WITHOUT THE EXPRESSED WRITTEN APPROVAL OF LAWRENCE PARRINGTON. THIS DOCUMENT CONTAINS PRIVATE OR PRIVILEGED INFORMATION WHICH IS DISCLOSED IN CONFIDENCE. THIS INFORMATION MAY BE USED, DISTRIBUTED OR DISCLOSED ONLY TO THE EXTENT AS SPECIFICALLY AUTHORIZED IN WRITING BY LAWRENCE PARRINGTON.

PROJECT TITLE		SCISSOR LAMP	
PART NAME			
BASE DOWEL CROSS PIN			
MATERIAL		DATE	
MAPLE		6/6/2013	
SHEET 1 OF 1		SCALE 3:1	REV IR

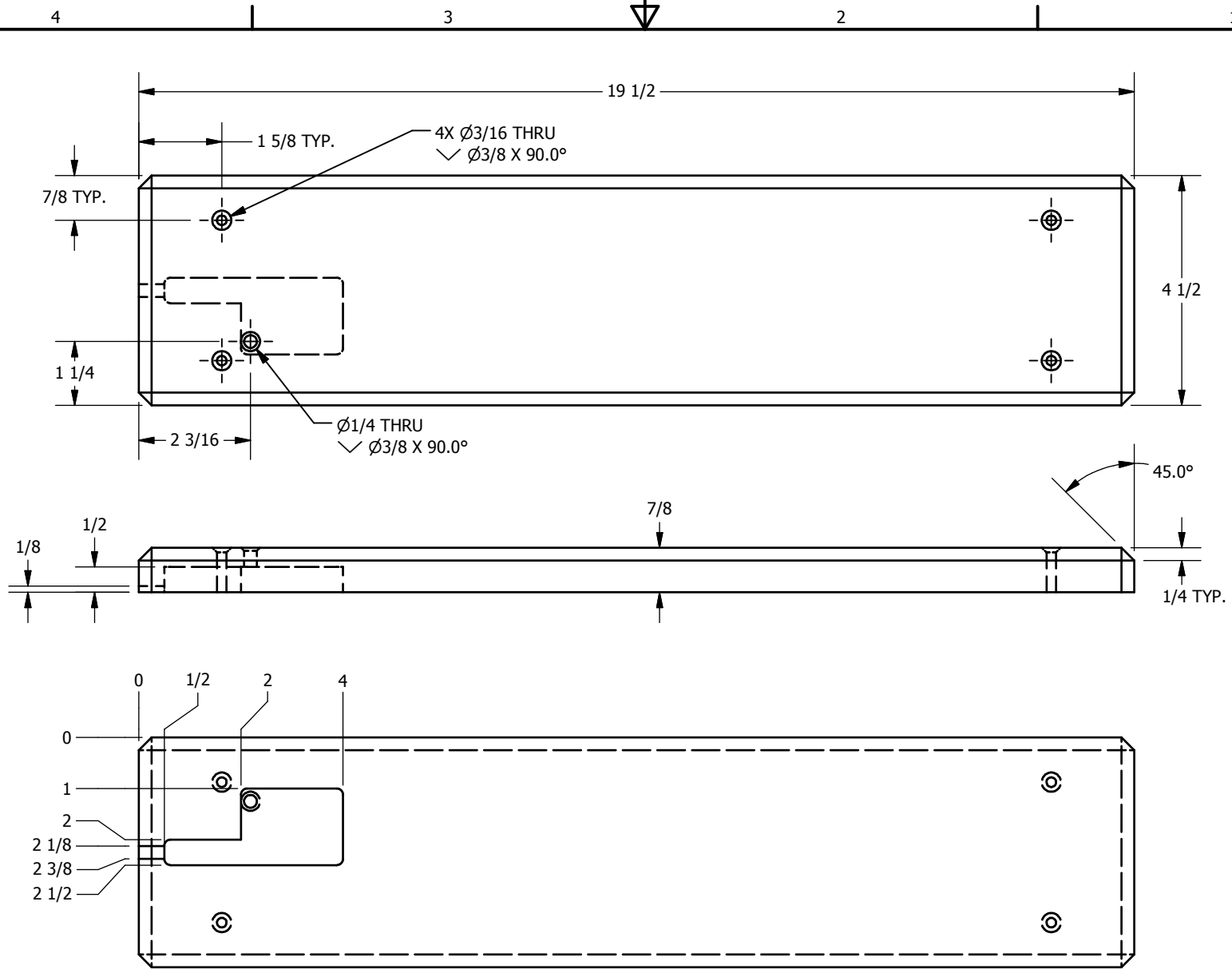
4

3

2

1

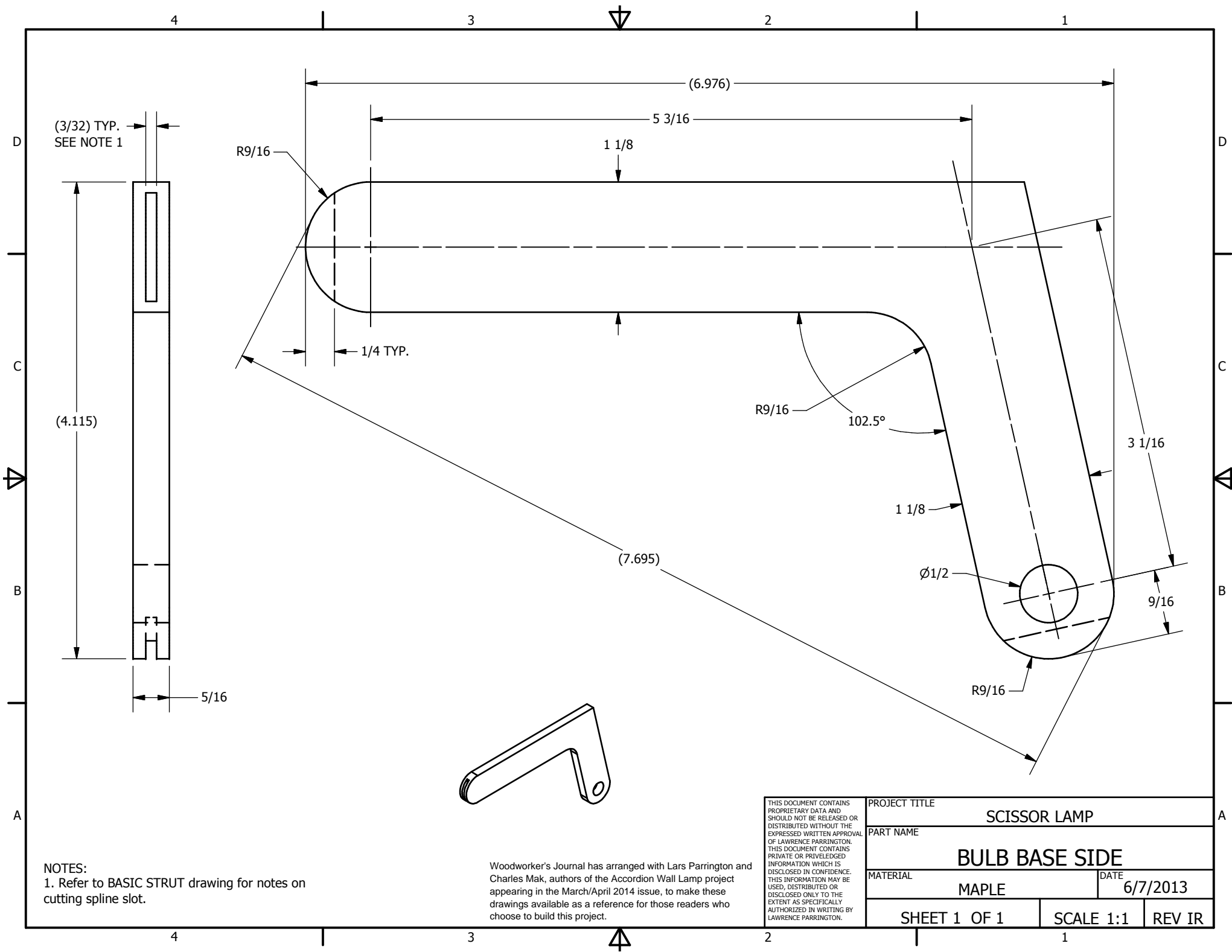
▽



Woodworker's Journal has arranged with Lars Parrington and Charles Mak, authors of the Accordion Wall Lamp project appearing in the March/April 2014 issue, to make these drawings available as a reference for those readers who choose to build this project.

THIS DOCUMENT CONTAINS PROPRIETARY DATA AND SHOULD NOT BE RELEASED OR DISTRIBUTED WITHOUT THE EXPRESSED WRITTEN APPROVAL OF LAWRENCE PARRINGTON. THIS DOCUMENT CONTAINS PRIVATE OR PRIVILEGED INFORMATION WHICH IS DISCLOSED IN CONFIDENCE. THIS INFORMATION MAY BE USED, DISTRIBUTED OR DISCLOSED ONLY TO THE EXTENT AS SPECIFICALLY AUTHORIZED IN WRITING BY LAWRENCE PARRINGTON.

PROJECT TITLE		SCISSOR LAMP	
PART NAME			
BASE PLATE		DATE	
MAPLE		6/6/2013	
SHEET 1 OF 1		SCALE 1:3	REV IR



(3/32) TYP.
SEE NOTE 1

R9/16

(6.976)

5 3/16

1 1/8

1/4 TYP.

R9/16

102.5°

1 1/8

Ø1/2

3 1/16

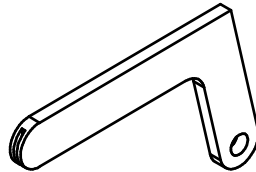
9/16

R9/16

(4.115)

(7.695)

5/16

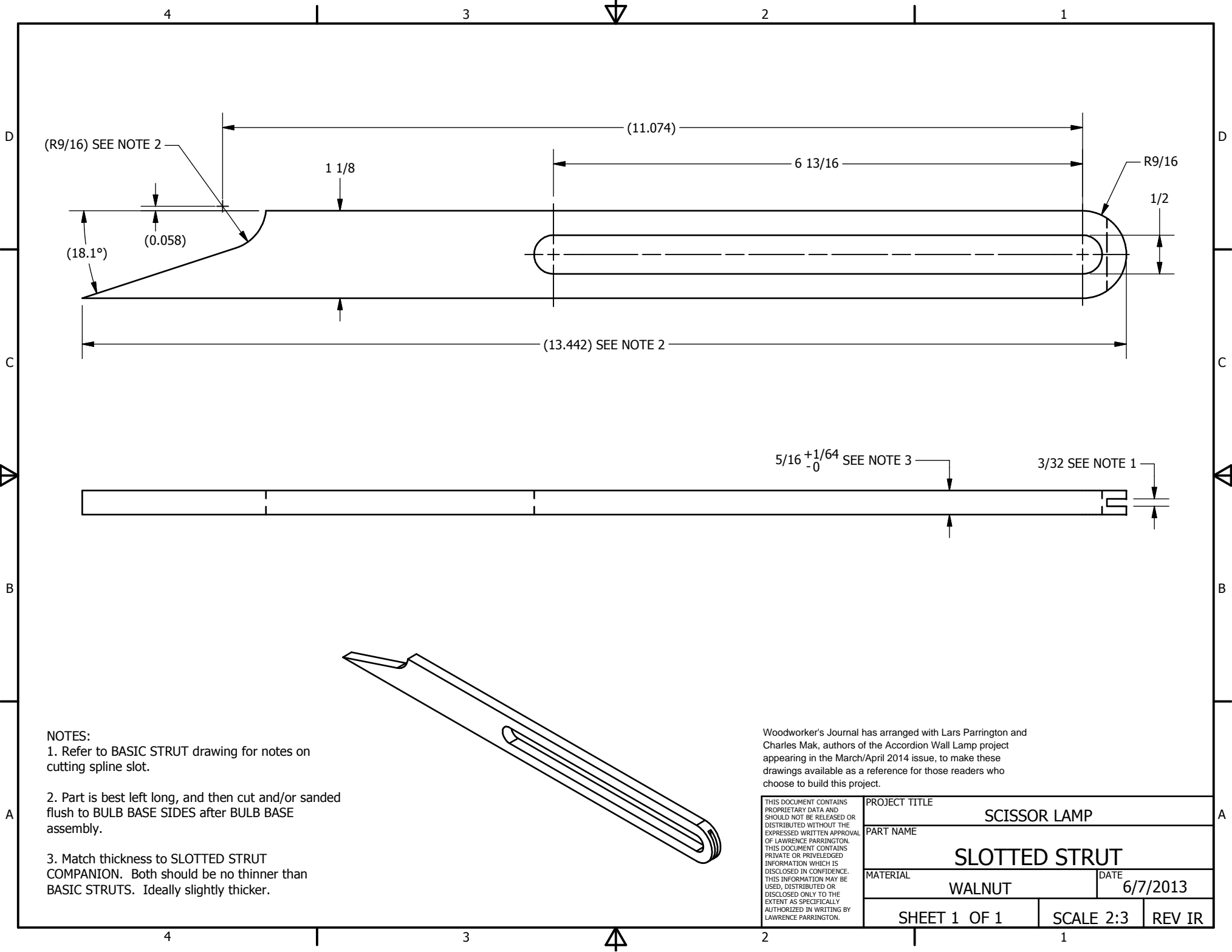


NOTES:
1. Refer to BASIC STRUT drawing for notes on cutting spline slot.

Woodworker's Journal has arranged with Lars Parrington and Charles Mak, authors of the Accordion Wall Lamp project appearing in the March/April 2014 issue, to make these drawings available as a reference for those readers who choose to build this project.

THIS DOCUMENT CONTAINS PROPRIETARY DATA AND SHOULD NOT BE RELEASED OR DISTRIBUTED WITHOUT THE EXPRESSED WRITTEN APPROVAL OF LAWRENCE PARRINGTON. THIS DOCUMENT CONTAINS PRIVATE OR PRIVILEGED INFORMATION WHICH IS DISCLOSED IN CONFIDENCE. THIS INFORMATION MAY BE USED, DISTRIBUTED OR DISCLOSED ONLY TO THE EXTENT AS SPECIFICALLY AUTHORIZED IN WRITING BY LAWRENCE PARRINGTON.

PROJECT TITLE		SCISSOR LAMP	
PART NAME			
BULB BASE SIDE		DATE	
MAPLE		6/7/2013	
SHEET 1 OF 1		SCALE 1:1	REV IR



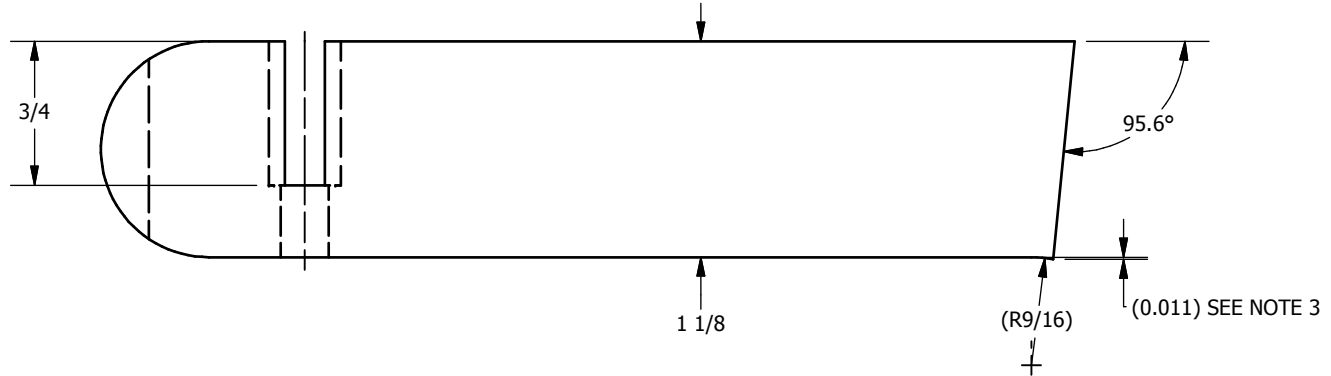
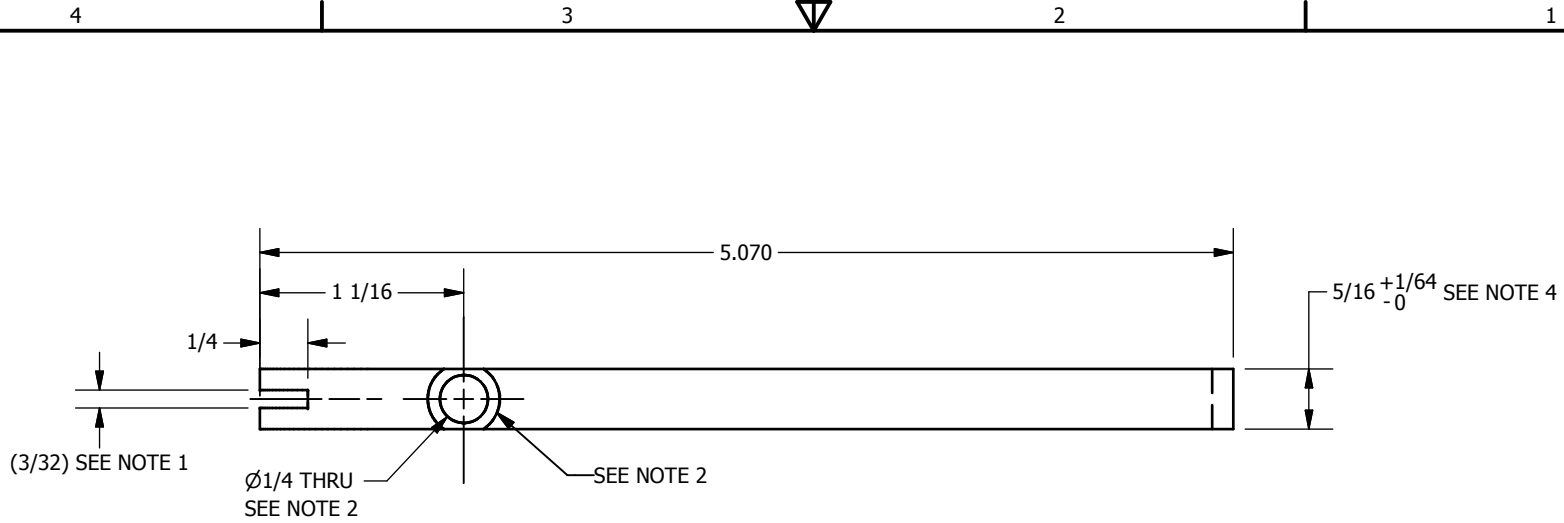
NOTES:

1. Refer to BASIC STRUT drawing for notes on cutting spline slot.
2. Part is best left long, and then cut and/or sanded flush to BULB BASE SIDES after BULB BASE assembly.
3. Match thickness to SLOTTED STRUT COMPANION. Both should be no thinner than BASIC STRUTS. Ideally slightly thicker.

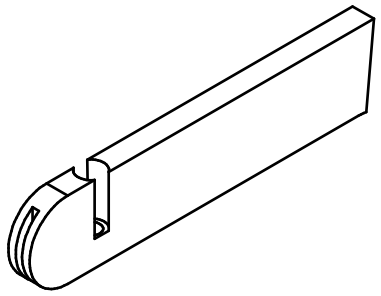
Woodworker's Journal has arranged with Lars Parrington and Charles Mak, authors of the Accordion Wall Lamp project appearing in the March/April 2014 issue, to make these drawings available as a reference for those readers who choose to build this project.

THIS DOCUMENT CONTAINS PROPRIETARY DATA AND SHOULD NOT BE RELEASED OR DISTRIBUTED WITHOUT THE EXPRESSED WRITTEN APPROVAL OF LAWRENCE PARRINGTON. THIS DOCUMENT CONTAINS PRIVATE OR PRIVILEGED INFORMATION WHICH IS DISCLOSED IN CONFIDENCE. THIS INFORMATION MAY BE USED, DISTRIBUTED OR DISCLOSED ONLY TO THE EXTENT AS SPECIFICALLY AUTHORIZED IN WRITING BY LAWRENCE PARRINGTON.

PROJECT TITLE		SCISSOR LAMP	
PART NAME			
SLOTTED STRUT		DATE	
WALNUT		6/7/2013	
SHEET 1 OF 1		SCALE 2:3	REV IR



- NOTES:
1. Refer to BASIC STRUT drawing for notes on cutting spline slot.
 2. Hole is drilled after gluing to BULB BASE SIDES and SLOTTED STRUT. Counterbore diameter is sized for lamp hardware to thread into (slightly less than 3/8").
 3. Slight curve shown will be formed when BULB BASE assembly is sanded flush.
 4. Match thickness to SLOTTED STRUT. Both should be no thinner than BASIC STRUTS. Ideally slightly thicker.



Woodworker's Journal has arranged with Lars Parrington and Charles Mak, authors of the Accordion Wall Lamp project appearing in the March/April 2014 issue, to make these drawings available as a reference for those readers who choose to build this project.

THIS DOCUMENT CONTAINS PROPRIETARY DATA AND SHOULD NOT BE RELEASED OR DISTRIBUTED WITHOUT THE EXPRESSED WRITTEN APPROVAL OF LAWRENCE PARRINGTON. THIS DOCUMENT CONTAINS PRIVATE OR PRIVILEGED INFORMATION WHICH IS DISCLOSED IN CONFIDENCE. THIS INFORMATION MAY BE USED, DISTRIBUTED OR DISCLOSED ONLY TO THE EXTENT AS SPECIFICALLY AUTHORIZED IN WRITING BY LAWRENCE PARRINGTON.

PROJECT TITLE		SCISSOR LAMP	
PART NAME			
SLOTTED STRUT COMPANION		DATE	
MATERIAL		6/7/2013	
WALNUT		REV IR	
SHEET 1 OF 1		SCALE 1:1	REV IR

4

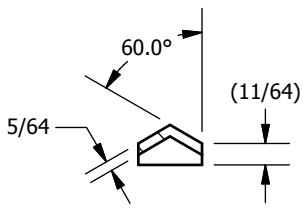
3

2

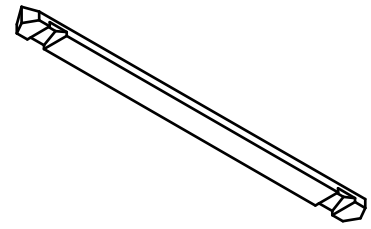
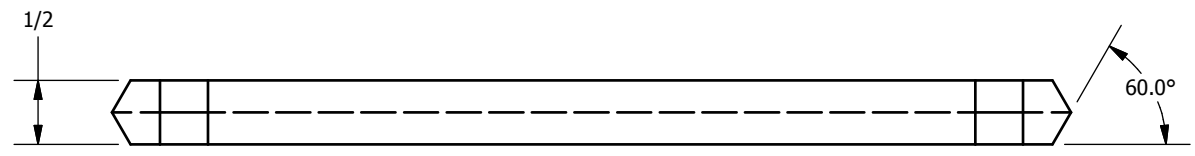
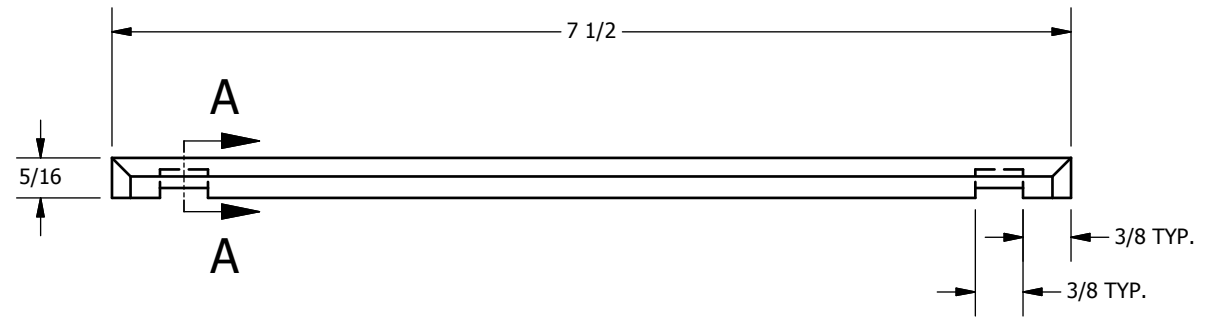
1

D

D



SECTION A-A
SCALE 2 / 3



Woodworker's Journal has arranged with Lars Parrington and Charles Mak, authors of the Accordion Wall Lamp project appearing in the March/April 2014 issue, to make these drawings available as a reference for those readers who choose to build this project.

THIS DOCUMENT CONTAINS PROPRIETARY DATA AND SHOULD NOT BE RELEASED OR DISTRIBUTED WITHOUT THE EXPRESSED WRITTEN APPROVAL OF LAWRENCE PARRINGTON. THIS DOCUMENT CONTAINS PRIVATE OR PRIVILEGED INFORMATION WHICH IS DISCLOSED IN CONFIDENCE. THIS INFORMATION MAY BE USED, DISTRIBUTED OR DISCLOSED ONLY TO THE EXTENT AS SPECIFICALLY AUTHORIZED IN WRITING BY LAWRENCE PARRINGTON.

PROJECT TITLE		SCISSOR LAMP	
PART NAME			
LAMP SHADE VERTICAL		DATE	
MATERIAL		6/7/2013	
WALNUT		REV IR	
SHEET 1 OF 1		SCALE 2:3	REV IR

C

C



B

B

A

A

4

3

2

1



4

3

2

1

D

D

C

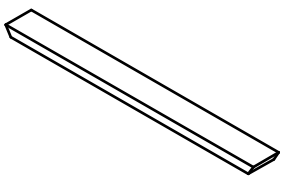
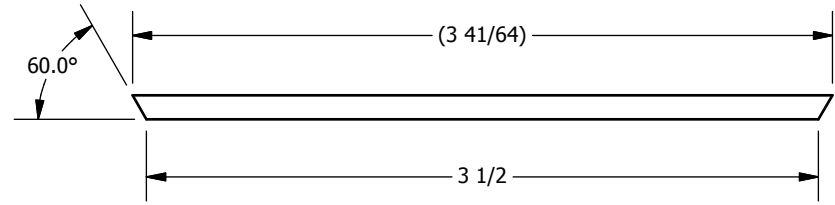
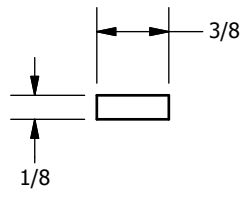
C

B

B

A

A



Woodworker's Journal has arranged with Lars Parrington and Charles Mak, authors of the Accordion Wall Lamp project appearing in the March/April 2014 issue, to make these drawings available as a reference for those readers who choose to build this project.

THIS DOCUMENT CONTAINS PROPRIETARY DATA AND SHOULD NOT BE RELEASED OR DISTRIBUTED WITHOUT THE EXPRESSED WRITTEN APPROVAL OF LAWRENCE PARRINGTON. THIS DOCUMENT CONTAINS PRIVATE OR PRIVILEGED INFORMATION WHICH IS DISCLOSED IN CONFIDENCE. THIS INFORMATION MAY BE USED, DISTRIBUTED OR DISCLOSED ONLY TO THE EXTENT AS SPECIFICALLY AUTHORIZED IN WRITING BY LAWRENCE PARRINGTON.

PROJECT TITLE		SCISSOR LAMP	
PART NAME			
LAMP SHADE HORIZONTAL		DATE	
MATERIAL		6/7/2013	
WALNUT		REV IR	
SHEET 1 OF 1		SCALE 1:1	REV IR

4

3

2

1



4

3

2

1

D

D

C

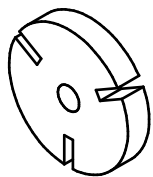
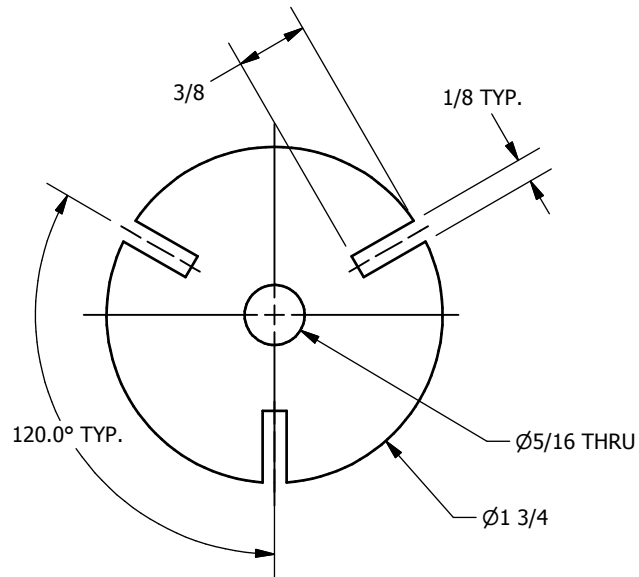
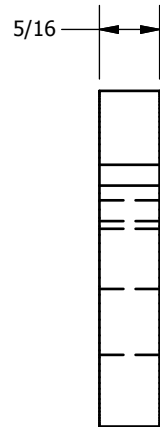
C

B

B

A

A



Woodworker's Journal has arranged with Lars Parrington and Charles Mak, authors of the Accordion Wall Lamp project appearing in the March/April 2014 issue, to make these drawings available as a reference for those readers who choose to build this project.

THIS DOCUMENT CONTAINS PROPRIETARY DATA AND SHOULD NOT BE RELEASED OR DISTRIBUTED WITHOUT THE EXPRESSED WRITTEN APPROVAL OF LAWRENCE PARRINGTON. THIS DOCUMENT CONTAINS PRIVATE OR PRIVILEGED INFORMATION WHICH IS DISCLOSED IN CONFIDENCE. THIS INFORMATION MAY BE USED, DISTRIBUTED OR DISCLOSED ONLY TO THE EXTENT AS SPECIFICALLY AUTHORIZED IN WRITING BY LAWRENCE PARRINGTON.

PROJECT TITLE		SCISSOR LAMP	
PART NAME			
LAMP SHADE HUB		DATE	
WALNUT		6/7/2013	
SHEET 1 OF 1		SCALE 1:1	REV IR

4

3

2

1



4

3

2

1

D

D

C

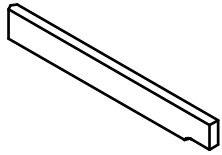
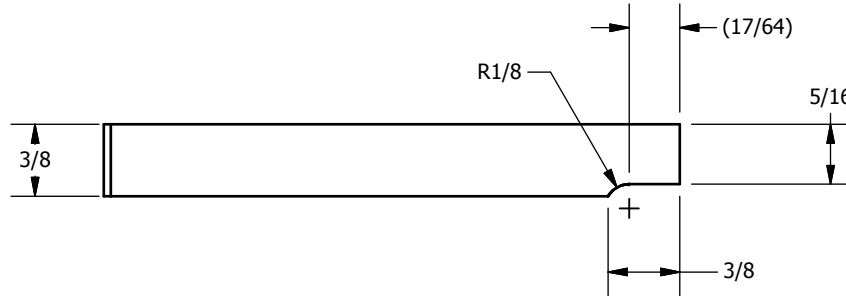
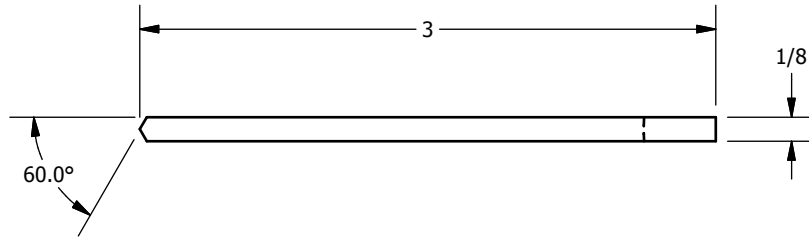
C

B

B

A

A



Woodworker's Journal has arranged with Lars Parrington and Charles Mak, authors of the Accordion Wall Lamp project appearing in the March/April 2014 issue, to make these drawings available as a reference for those readers who choose to build this project.

<small>THIS DOCUMENT CONTAINS PROPRIETARY DATA AND SHOULD NOT BE RELEASED OR DISTRIBUTED WITHOUT THE EXPRESSED WRITTEN APPROVAL OF LAWRENCE PARRINGTON. THIS DOCUMENT CONTAINS PRIVATE OR PRIVILEGED INFORMATION WHICH IS DISCLOSED IN CONFIDENCE. THIS INFORMATION MAY BE USED, DISTRIBUTED OR DISCLOSED ONLY TO THE EXTENT AS SPECIFICALLY AUTHORIZED IN WRITING BY LAWRENCE PARRINGTON.</small>	PROJECT TITLE		
	SCISSOR LAMP		
	PART NAME		
	LAMP SHADE SPOKE		
MATERIAL		DATE	
WALNUT		6/7/2013	
SHEET 1 OF 1		SCALE 1:1	REV IR

4

3

2

1

