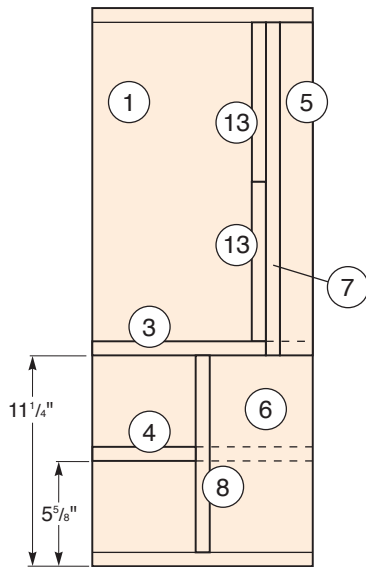
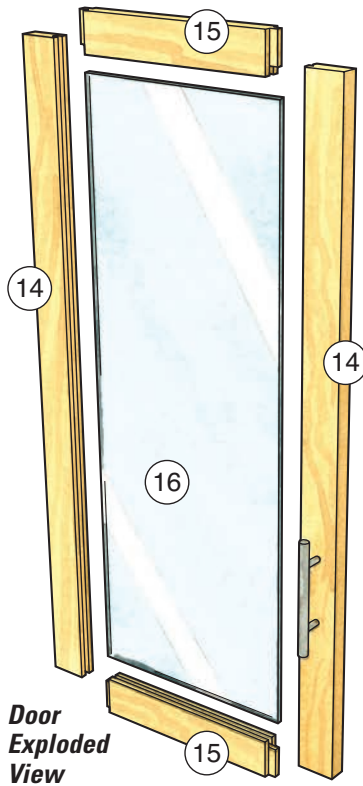
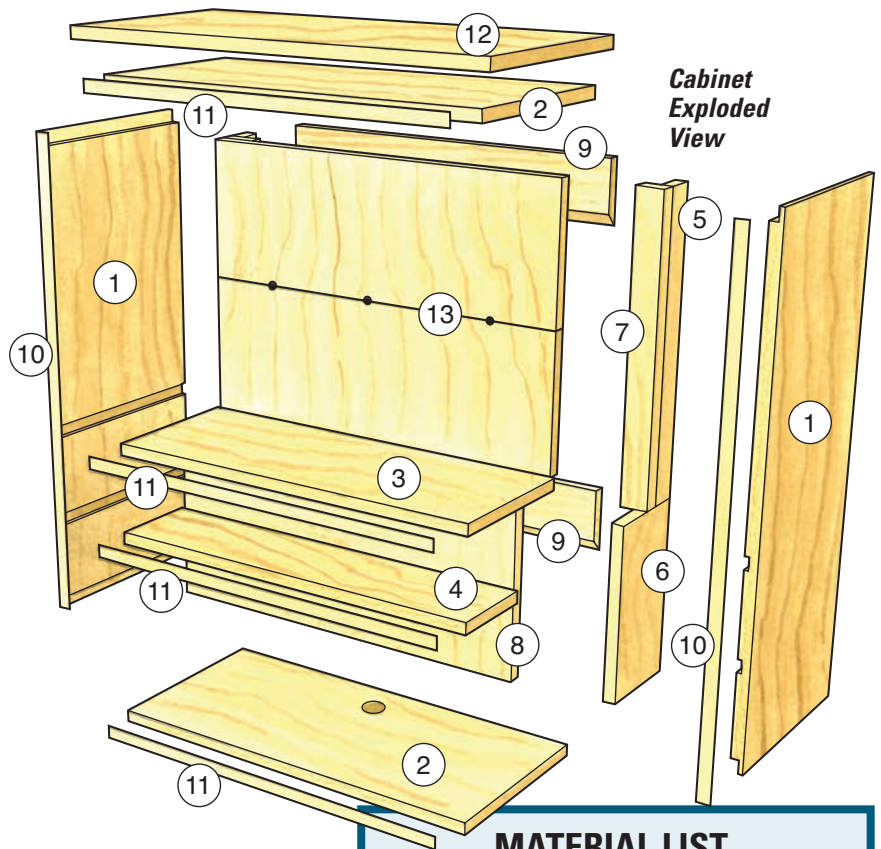


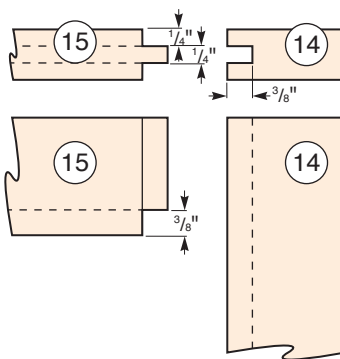
**Carcass Side**  
(Inside View)



**Cabinet Exploded View**



**Door Frame**  
(Top, Front View)



**MATERIAL LIST**

	<b>T x W x L</b>
<b>1</b> Carcass Sides (2)	3/4" x 11 3/4" x 29 3/4"
<b>2</b> Carcass Top, Bottom (2)	3/4" x 11 3/4" x 24 3/4"
<b>3</b> Upper Shelf (1)	3/4" x 9 1/4" x 24 1/4"
<b>4</b> Lower Shelf (1)	3/4" x 5 1/2" x 24 1/4"
<b>5</b> Upper Blocking (2)	3/4" x 1 3/4" x 17 3/4"
<b>6</b> Lower Blocking (2)	3/4" x 5 1/2" x 10 1/2"
<b>7</b> Cleats (2)	3/4" x 1 3/4" x 17 3/4"
<b>8</b> Lower Back Panel (1)	3/4" x 23 3/4" x 10 1/2"
<b>9</b> French Cleats (2)	3/4" x 4" x 22 1/4"
<b>10</b> Long Edging (2)	1/8" x 3/4" x 29 3/4"
<b>11</b> Short Edging (4)	1/8" x 3/4" x 23 3/4"
<b>12</b> Top (1)	3/4" x 12 3/4" x 27 1/4"
<b>13</b> Upper Back Panels (2)	3/4" x 23 3/4" x 8 1/2"
<b>14</b> Door Stiles (4)	3/4" x 1 3/4" x 29 1/16"
<b>15</b> Door Rails (4)	3/4" x 1 3/4" x 9 7/8"
<b>16</b> Acrylic Door Panels (2)	.22" x 9 7/8" x 26 7/8"