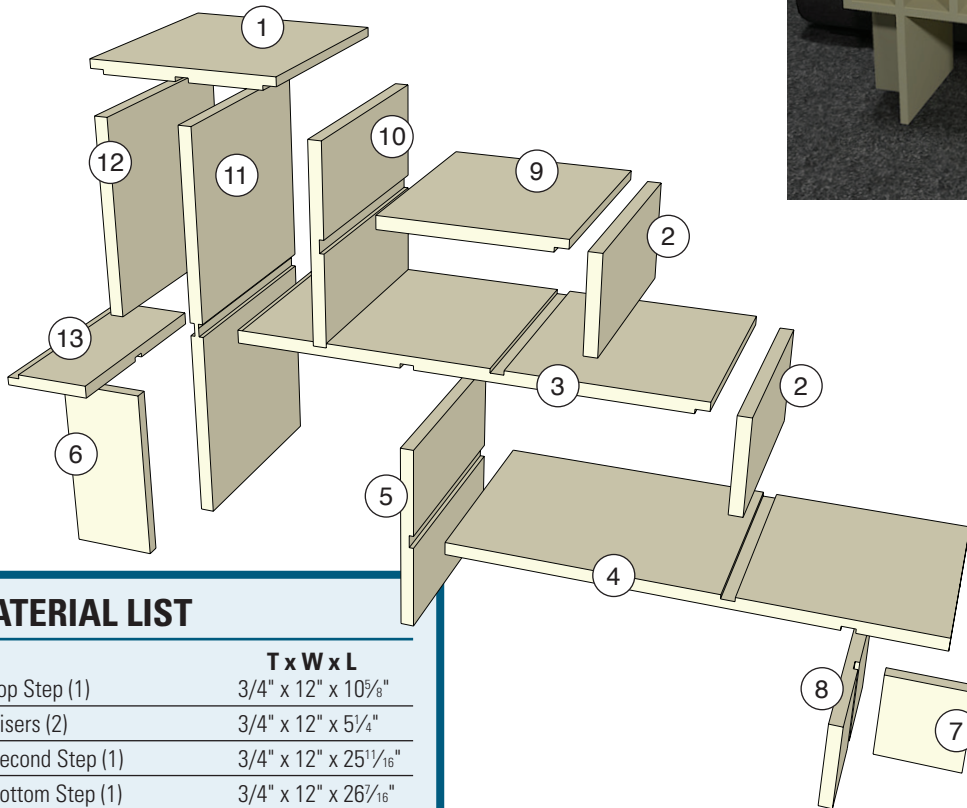
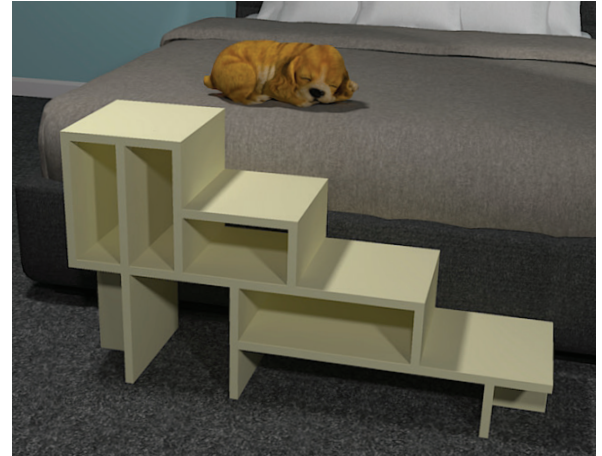


Whether your pooch is very young or very old, these doggie steps can help them climb onto the bed more easily.

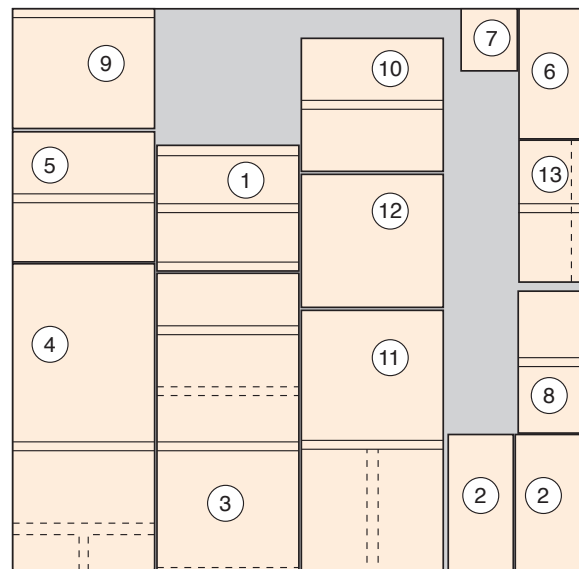


MATERIAL LIST

	T x W x L
1 Top Step (1)	3/4" x 12" x 10 5/8"
2 Risers (2)	3/4" x 12" x 5 1/4"
3 Second Step (1)	3/4" x 12" x 25 1/16"
4 Bottom Step (1)	3/4" x 12" x 26 7/16"
5 Left Vertical Support (1)	3/4" x 12" x 11"
6 Left End Support (1)	3/4" x 5 3/16" x 11"*
7 Right End Support (1)	3/4" x 4 3/4" x 5 1/4"*
8 Right Horizontal Support (1)	3/4" x 12" x 5 1/4"
9 Third Step (1)	3/4" x 12" x 10 1/8"
10 Third Riser (1)	3/4" x 12" x 11 1/4"
11 Tall Left Support (1)	3/4" x 12" x 22 1/2"
12 Left Outer Support (1)	3/4" x 12" x 11 1/4"
13 Left Horizontal Support (1)	3/4" x 12" x 5 3/16"

* Dry-fit, mark and cut to fit

Cutting Sheet (48" x 48")



NOTE: All the dados and grooves are the width of the bit and 1/4" deep.

