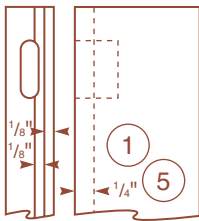


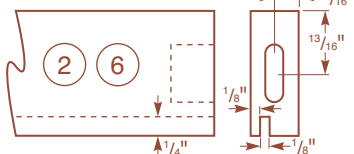
**Exploded View**

**Panels**  
(Top View)

**Stiles**  
(Side and Front Views)

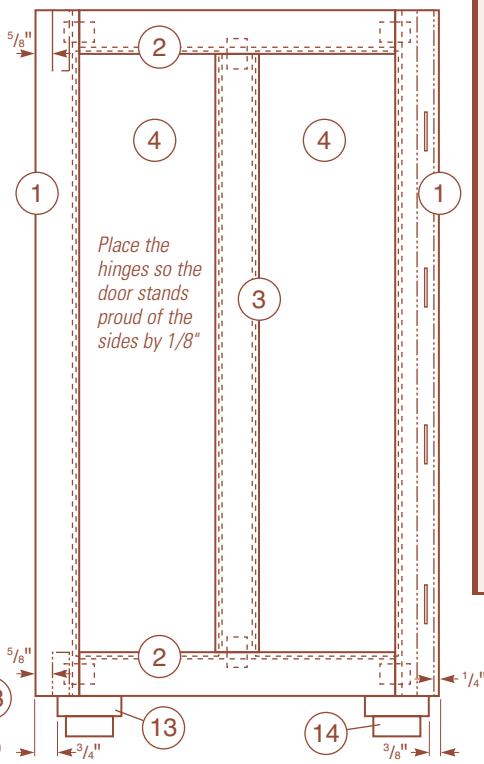


**Rails**  
(Front and End Views)

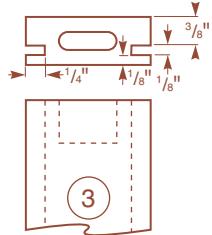


Note: Mortises are centered at ends of the rails (pieces 2, 6, 8, and 9) and muntins (pieces 3). Matching mortises are based on these locations.

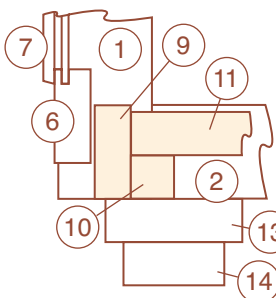
**Side Assembly**  
(Inside View)



**Muntins**  
(Top and Front Views)



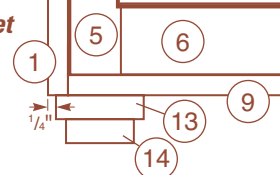
**Lower Rail, Ledger & Bottom Detail**



## MATERIAL LIST

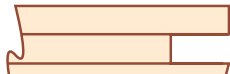
	T x W x L
1 Case Stiles (6)	5/8" x 1 5/8" x 25 1/2"
2 Case Rails (6)	5/8" x 1 5/8" x 11 3/4"
3 Case Muntins (3)	5/8" x 1 5/8" x 22 1/4"
4 Case Panels (6)	7/16" x 5 5/16" x 22 1/2"
5 Door Stiles (2)	5/8" x 1 5/8" x 22 3/4"
6 Door Rails (2)	5/8" x 1 5/8" x 11 5/8"
7 Door Panel (1)	7/16" x 12 7/8" x 19 3/4"
8 Upper Rail (1)	5/8" x 2 1/4" x 15"
9 Lower Rail (1)	5/8" x 1 5/8" x 15"
10 Ledgers (4)	3/4" x 3/4" x 15"
11 Bottom (1)	3/4" x 12 7/8" x 15"
12 Top (1)	5/8" x 15 5/8" x 18"
13 Large Foot Block (4)	3/4" x 2 3/8" x 2 3/4"
14 Small Foot Block (4)	3/4" x 1 1/4" x 2 5/8"
15 Shelf (1)	5/8" x 12 7/8" x 15"
16 Biscuits (8)	#20
17 Dominos (22)	5 x 30 mm
18 Hinges (2)	2" x 1" Brass
19 Door Catch (1)	Brass
20 Pull (1)	5/8" Diameter Brass

**Foot Offset**  
(Front View)



## Frame and Panel Construction

The angle on the overlay panel is cut onto the edge of the piece that stands proud of the rails and stiles.



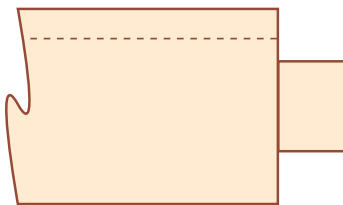
**Panel Section**  
(End View)



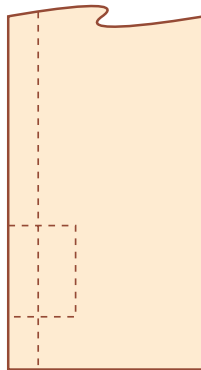
**Rail or Stile**  
(End View)

15° Angle

The Domino loose tenon system worked well for this cabinet. Other loose tenon techniques or dowel joinery would work perfectly well to make these joints. The panels must float freely in the grooves to accommodate seasonal wood movement.

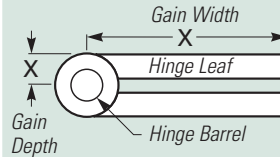


**Rail**  
(Front View)



**Stile**  
(Front View)

### Two Critical Hinge Gain Measurements



The area cut away to accept the hinge is called a hinge gain.

