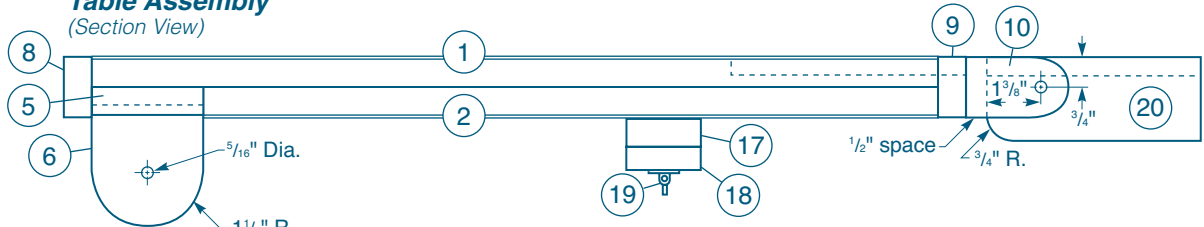
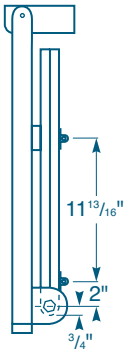


Table Assembly
(Section View)

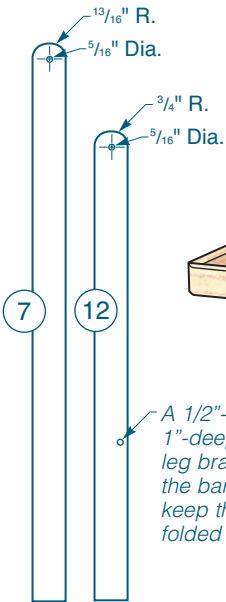


Two barrel bolts serve three purposes. The bolt underneath the table prevents the leg from swinging uncontrolled as the table is tipped up or down. The one on the leg keeps it retracted or extended for use.

Table and Leg Closed
(Side View)

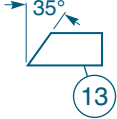


Side Edging and Braces
(Side Views)



A 1/2"-diameter, 1"-deep hole in the leg brace receives the barrel bolt to keep the leg folded closed.

Guide Strip
(End View)



Filler Strip
(Front View)



MATERIAL LIST

	T x W x L		T x W x L
1 Table Core, Top (1)	3/4" x 22 3/4" x 42 1/2"	13 Guide Strips (2)	3/4" x 1 3/4" x 20 1/2"
2 Table Core, Bottom (1)	3/4" x 19 3/4" x 42 1/2"	14 Extension (1)	3/4" x 6 9/16" x 22"
3 Laminate, Top (1)	1/16" x 22 3/4" x 42 1/2"	15 Handle (1)	3/4" x 1" x 5 3/8"
4 Laminate, Bottom (1)	1/16" x 19 3/4" x 42 1/2"	16 Bolts, Washers, Nuts (2)	5/16" x 2" (Nylon lock nuts)
5 Filler Strip (1)	3/4" x 3" x 42 1/2"	17 Spacer (1)	3/4" x 2" x 15 3/8"
6 Leg Pivot Brackets (2)	3/4" x 3" x 3 3/4"	18 Build-up Strip (1)	5/8" x 2" x 4 1/2"
7 Side Edging (2)	3/4" x 1 5/8" x 26 1/4"	19 Barrel Bolts (2)	6" Steel
8 Front Edging (1)	3/4" x 1 5/8" x 44"	20 Mounting Plate (1)	2 1/4" x 5 3/4" x 40 3/4"
9 Back Edging (1)	3/4" x 1 5/8" x 42 1/2"	21 Lag Screws, Washers (5)	5/16" x 2"
10 Table Pivot Brackets (2)	3/4" x 1 5/8" x 2 3/4"	22 Lag Screws, Washers (2)	5/16" x 5"
11 Leg Back Panel (1)	3/4" x 9" x 20 1/2"	23 Leg Stop, Back (1)	3/4" x 2" x 16"
12 Braces (2)	3/4" x 1 1/2" x 22"	24 Leg Stop, Bottom (1)	3/4" x 1 1/2" x 16"

* Adjust the thickness to suit your saw.