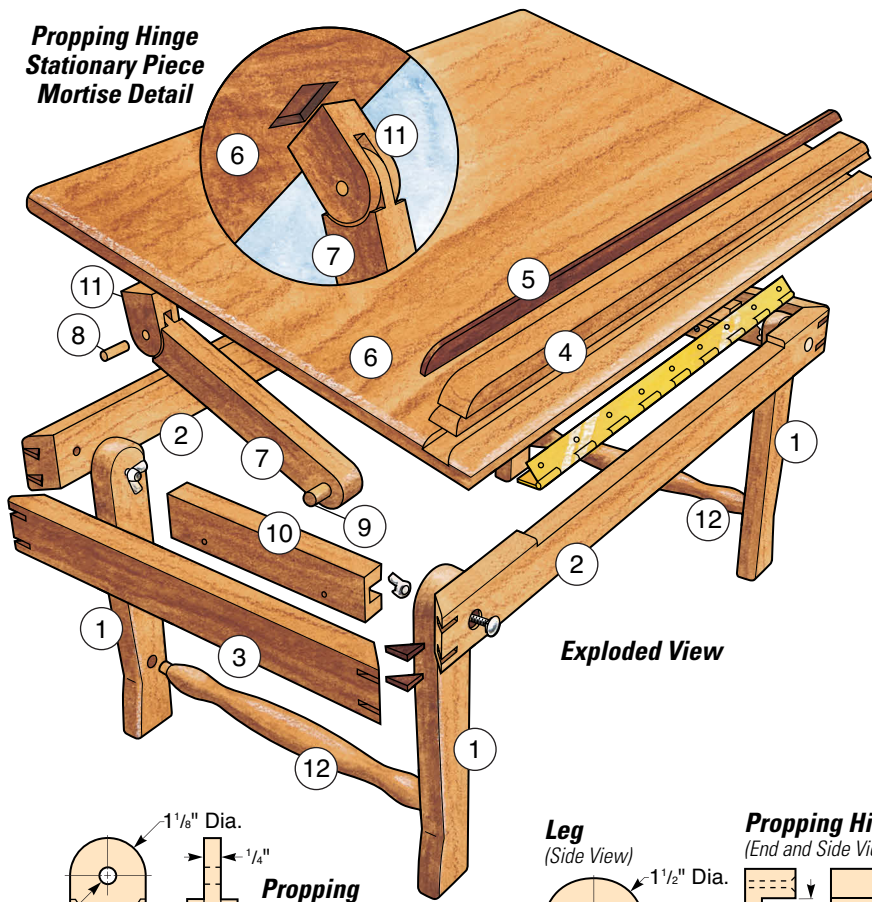
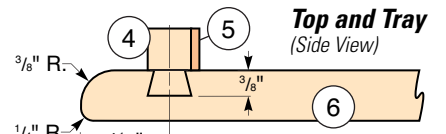


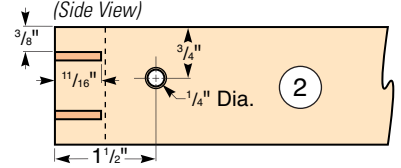
Propping Hinge Stationary Piece Mortise Detail



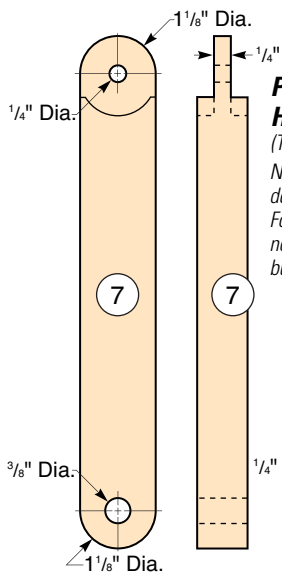
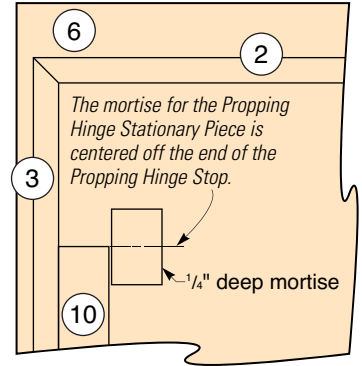
Exploded View



Wedges and Apron (Side View)



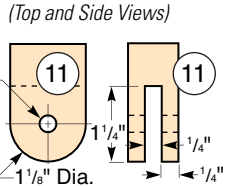
Top and Aprons (Bottom View)



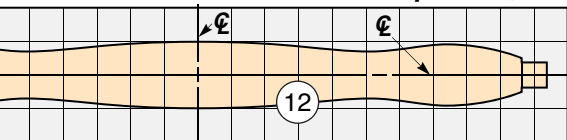
Propping Hinge Arm (Top and Side Views)

Note: The tenon's curved shoulder (piece 7) is formed using a Forstner bit. For clearance, it is not centered on the dowel hole but moved in.

Propping Hinge Stationary Pieces (Top and Side Views)

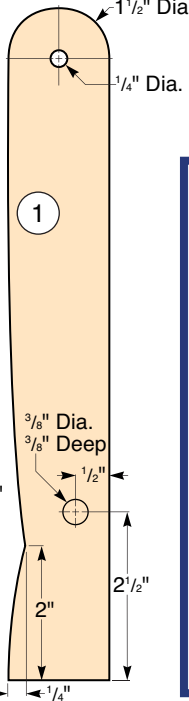


Spindle (Top View)

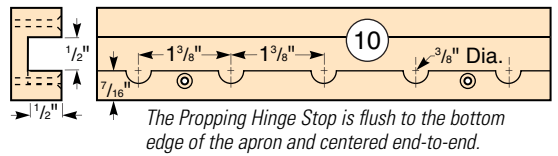


Each square = 1/2"

Leg (Side View)



Propping Hinge Stop (End and Side Views)



The Propping Hinge Stop is flush to the bottom edge of the apron and centered end-to-end.

MATERIAL LIST

	T x W x L
1 Legs (4)	3/4" x 1 1/2" x 10"
2 Long Aprons (2)	5/8" x 1 3/4" x 21 1/2"
3 Short Aprons (2)	5/8" x 1 3/4" x 12 3/8"
4 Ledge (1)	5/8" x 1" x 22"
5 Ledge Edging (1)	1/8" x 5/8" x 21 1/2"
6 Top (1)	3/4" x 14" x 22"
7 Propping Hinge Arms (2)	3/4" x 1 1/8" x 7 5/8"
8 Propping Hinge Small Dowels (2)	1/4" x 3/4"
9 Propping Hinge Large Dowels (2)	3/8" x 1 3/8"
10 Propping Hinge Stops (2)	3/4" x 1 3/8" x 6 3/4"
11 Propping Hinge Stationary Pieces (2)	3/4" x 1 1/2" x 1 3/4"
12 Crossbar Spindles (2)	1" Dia. x 10 3/8"