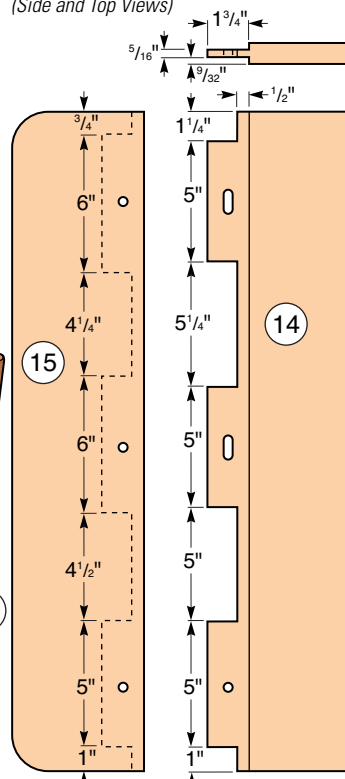


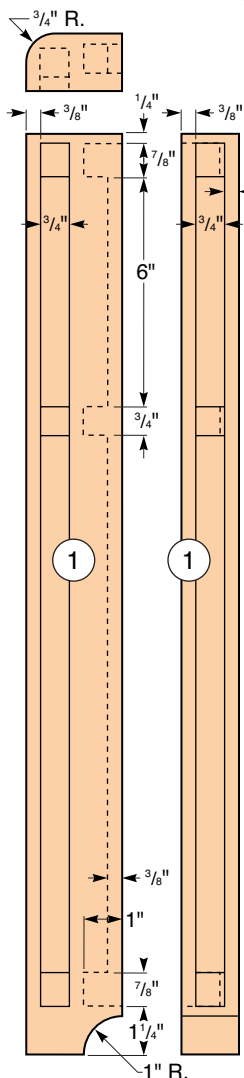
Exploded View

Lid Panel and Lid Ends
(Side and Top Views)

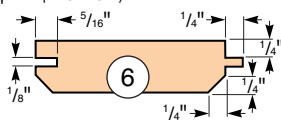


Note: The 3/8" dowel holes are centered on the tenons. To make the slots, extend the holes to 1" in length.

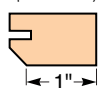
Leg
(Top Side and Inside Views)



Slats
(End View)

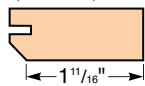


Side Outermost Slats
(End View)

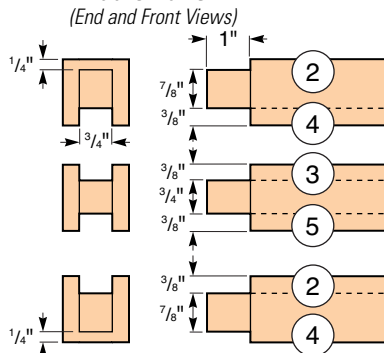


Note: The outermost slats are made by trimming down standard slats, pieces 6.

Front and Back Outermost Slats
(End View)



Top, Bottom and Middle Rails
(End and Front Views)



MATERIAL LIST

	T x W x L
1 Legs (4)	1 1/2" x 2 1/2" x 24"
2 Front/Back Top, Bottom Rails (4)	1 1/2" x 1 1/2" x 49 1/4"
3 Front/Back Middle Rails (2)	1 1/2" x 1 1/2" x 49 1/4"
4 Side Top, Bottom Rails (4)	1 1/2" x 1 1/2" x 23"
5 Side Middle Rails (2)	1 1/2" x 1 1/2" x 23"
6 Slats (54)	3/4" x 3" x 14"
7 Front/Back Top Panels (2)	23/32" x 5 7/8" x 48"
8 Front/Back Panel Facings (2)	.024" x 5 7/8" x 48" Stainless
9 Side Top Panels (2)	23/32" x 5 7/8" x 21 3/4"
10 Side Panel Facings (2)	.024" x 5 7/8" x 21 3/4" Stainless
11 Long Cleats (2)	3/4" x 3/4" x 45 3/4"
12 Short Cleats (2)	3/4" x 3/4" x 23"
13 Bottom (1)	3/4" x 23" x 47 1/4" Plywood
14 Lid Panel (1)	7/8" x 27 1/2" x 45 3/4"
15 Lid Ends (2)	7/8" x 5 1/2" x 27 1/2"
16 Dowel Pins (6)	3/8" Dia. x 7/8"
17 Handles	Rockler 23331 (192mm)
18 Piano Hinge (1)	Rockler 33958 (72")*

*Cut to 44"