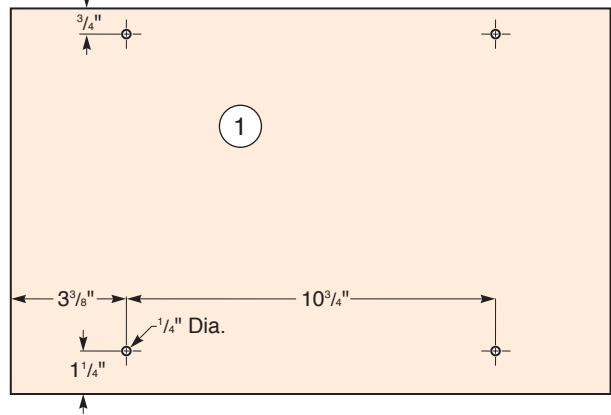


**Routing Jig**

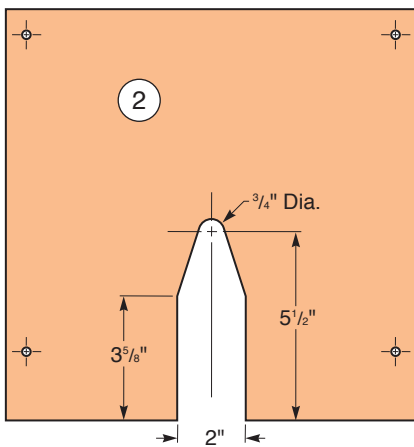
## MATERIAL LIST (Routing Jig)

	<b>T x W x L</b>
<b>1</b> Base (1)	3/4" x 11 1/4" x 17 1/2"
<b>2</b> Ramp Routing Templates (2)	1/2" x 12" x 12"
<b>3</b> Cutter Recess Template (1)	5/8" x 10 3/4" x 12"
<b>4</b> Carriage Bolts (4)	1/4" #20 x 4"
<b>5</b> Washers (16)	1/4" #20
<b>6</b> Nuts (4)	1/4" #20
<b>7</b> Springs (4)	1/2" x 1 1/4"
<b>8</b> Knobs (4)	1/4" #20
<b>9</b> Hinges (2)	1" x 1"
<b>10</b> Builder's Shims (3)	

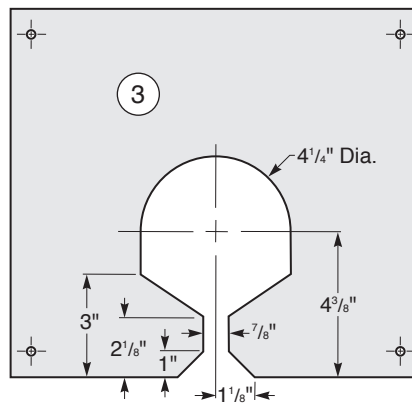
**Base**



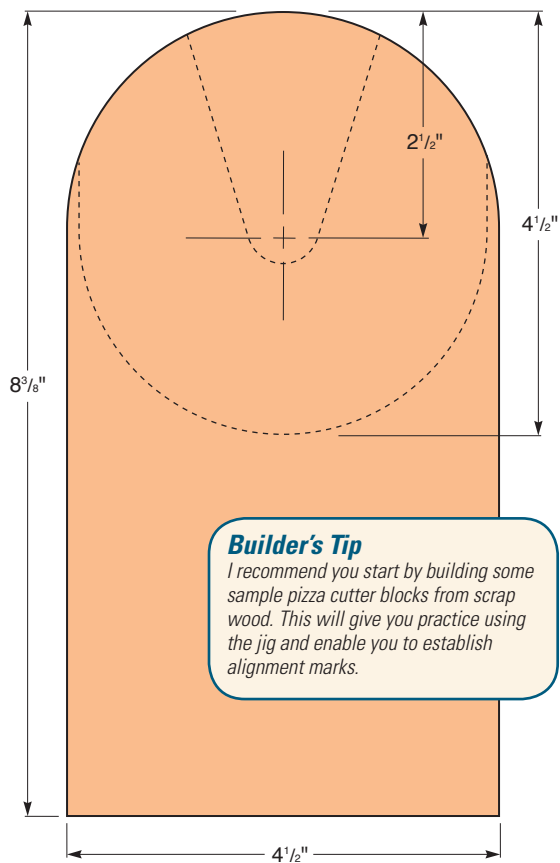
**Ramp Routing Template**



**Cutter Recess Template**

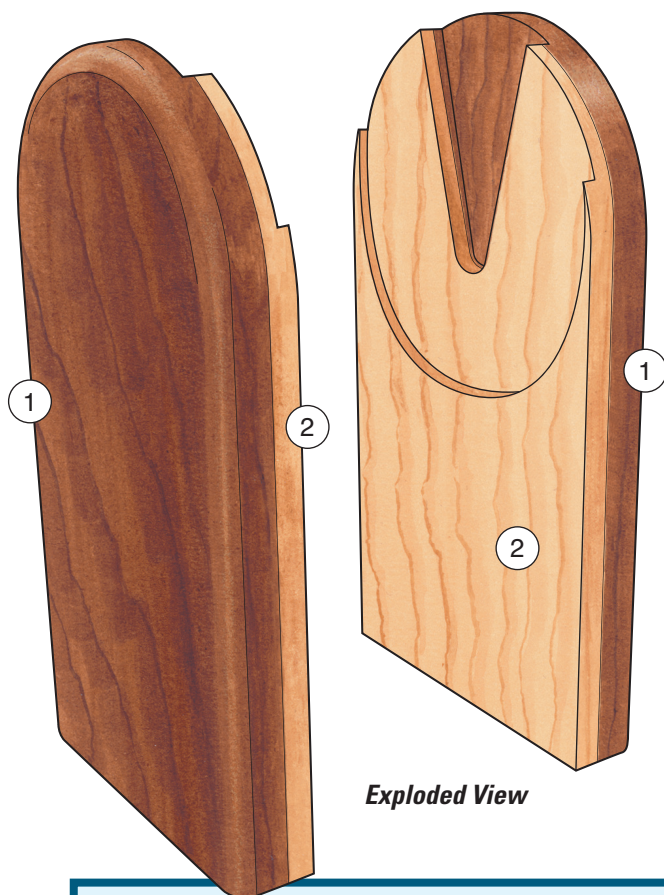


### Length of Router Cuts



#### Builder's Tip

I recommend you start by building some sample pizza cutter blocks from scrap wood. This will give you practice using the jig and enable you to establish alignment marks.



Exploded View

### MATERIAL LIST

	T x W x L
1 Outer Front and Back (2)	$5\frac{5}{8}" \times 4\frac{1}{2}" \times 8\frac{3}{8}"$
2 Inner Front and Back (2)	$5\frac{1}{16}" \times 4\frac{1}{2}" \times 8\frac{3}{8}"$