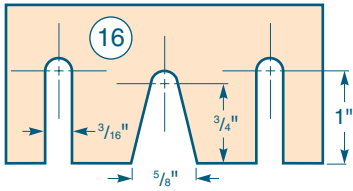
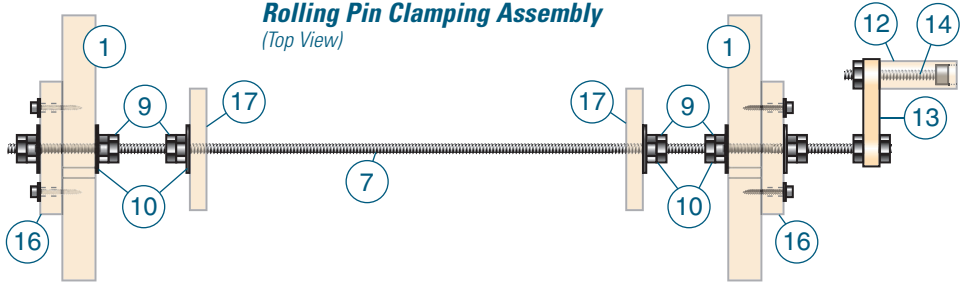


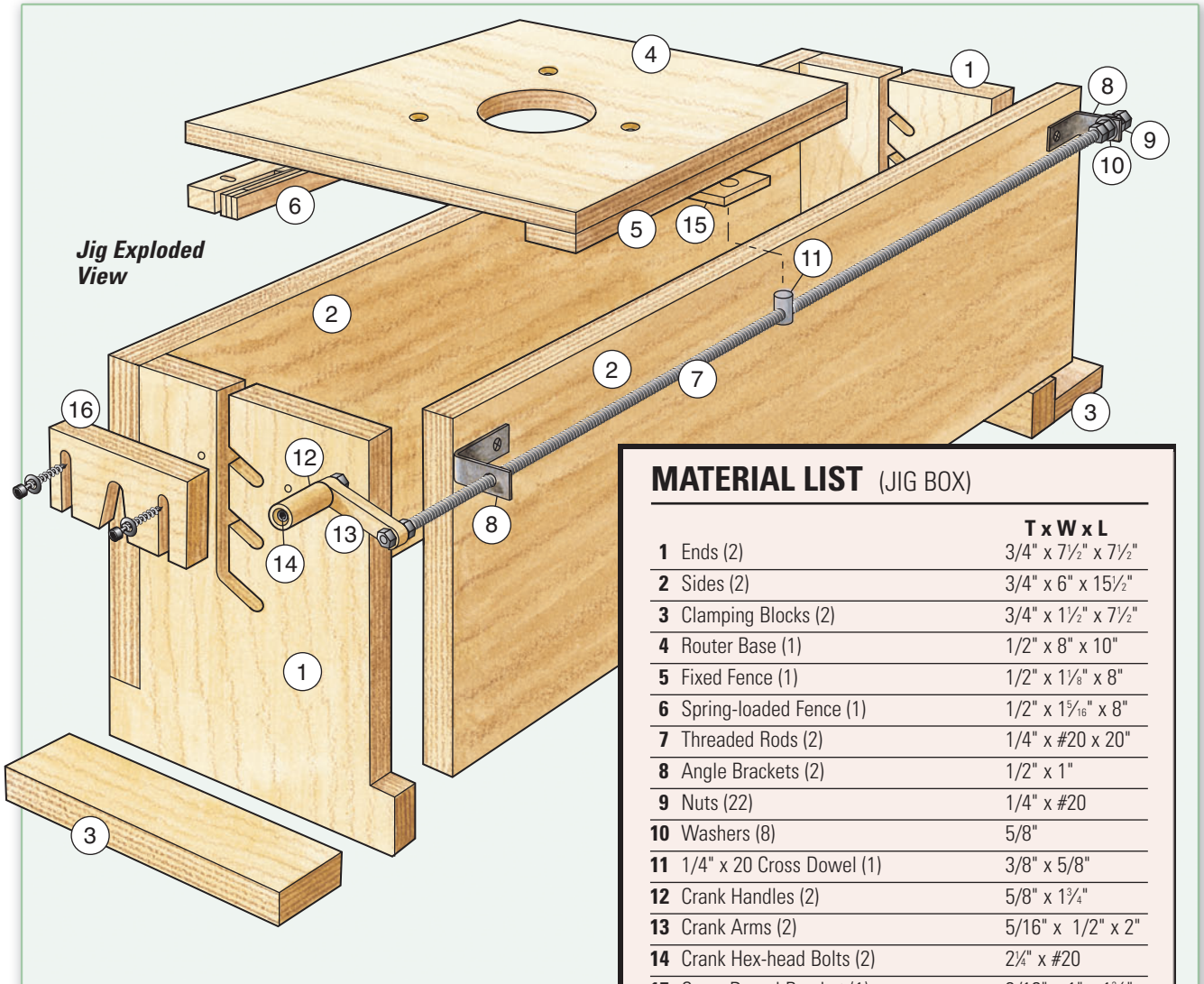
Locking Cleat
(Front View)



Rolling Pin Clamping Assembly
(Top View)



Jig Exploded View



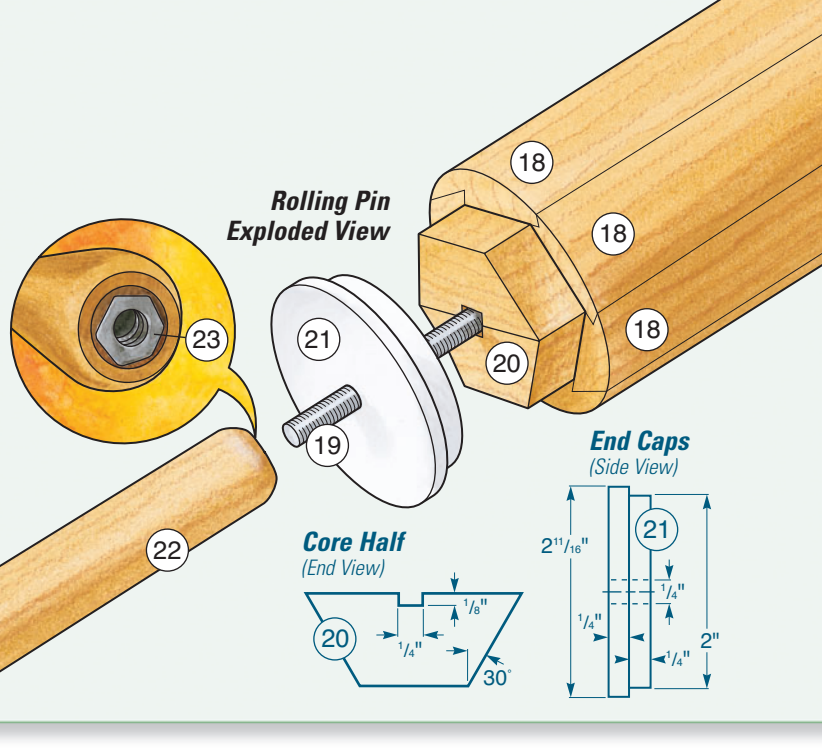
MATERIAL LIST (JIG BOX)

	T x W x L
1 Ends (2)	3/4" x 7 1/2" x 7 1/2"
2 Sides (2)	3/4" x 6" x 15 1/2"
3 Clamping Blocks (2)	3/4" x 1 1/2" x 7 1/2"
4 Router Base (1)	1/2" x 8" x 10"
5 Fixed Fence (1)	1/2" x 1 1/8" x 8"
6 Spring-loaded Fence (1)	1/2" x 1 5/16" x 8"
7 Threaded Rods (2)	1/4" x #20 x 20"
8 Angle Brackets (2)	1/2" x 1"
9 Nuts (22)	1/4" x #20
10 Washers (8)	5/8"
11 1/4" x 20 Cross Dowel (1)	3/8" x 5/8"
12 Crank Handles (2)	5/8" x 1 3/4"
13 Crank Arms (2)	5/16" x 1/2" x 2"
14 Crank Hex-head Bolts (2)	2 1/4" x #20
15 Cross Dowel Bracket (1)	3/16" x 1" x 1 3/4"
16 Locking Cleats (2)	1/2" x 1 1/2" x 3"
17 Sleeve Clamp Discs (2)	5/16" x 2 3/4"

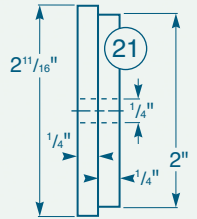
MATERIAL LIST (ROLLING PIN)

	T x W x L
18 Sleeve Segments (18)	5/8" x 1 1/8" x 9 1/2"
19 Threaded Rod (1)	1/4" x #20 x 12"
20 Core Halves (2)	1" x 2 5/16" x 9"
21 End Caps (2)	1/2" x 2 5/8" Dia.
22 Handles (2)	1" dia. x 5"
23 Handle Jamb Nuts (4)	1/4" x #20

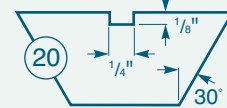
Rolling Pin
Exploded View



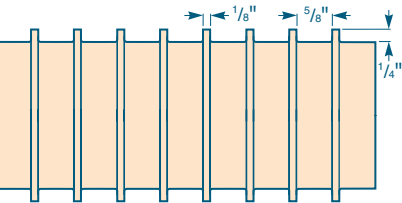
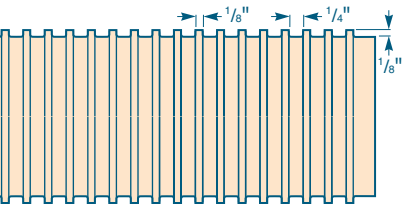
End Caps
(Side View)



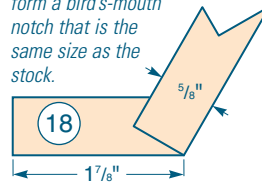
Core Half
(End View)



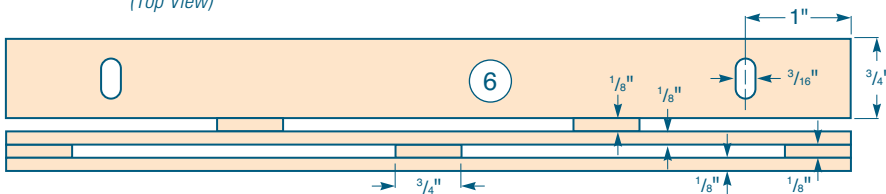
Sleeve Grooves
(Front View)



The fence and bit height are set to form a bird's-mouth notch that is the same size as the stock.



Spring-loaded Fence
(Top View)



End

(Front View)

