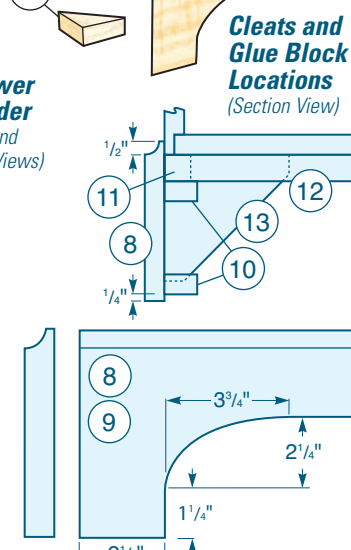
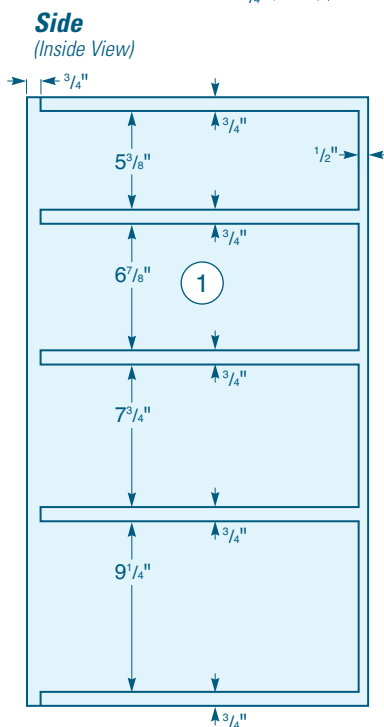
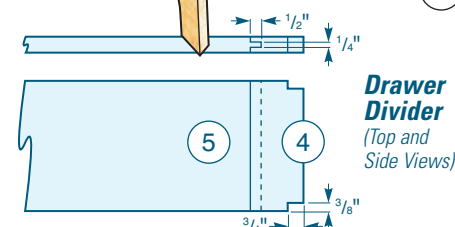
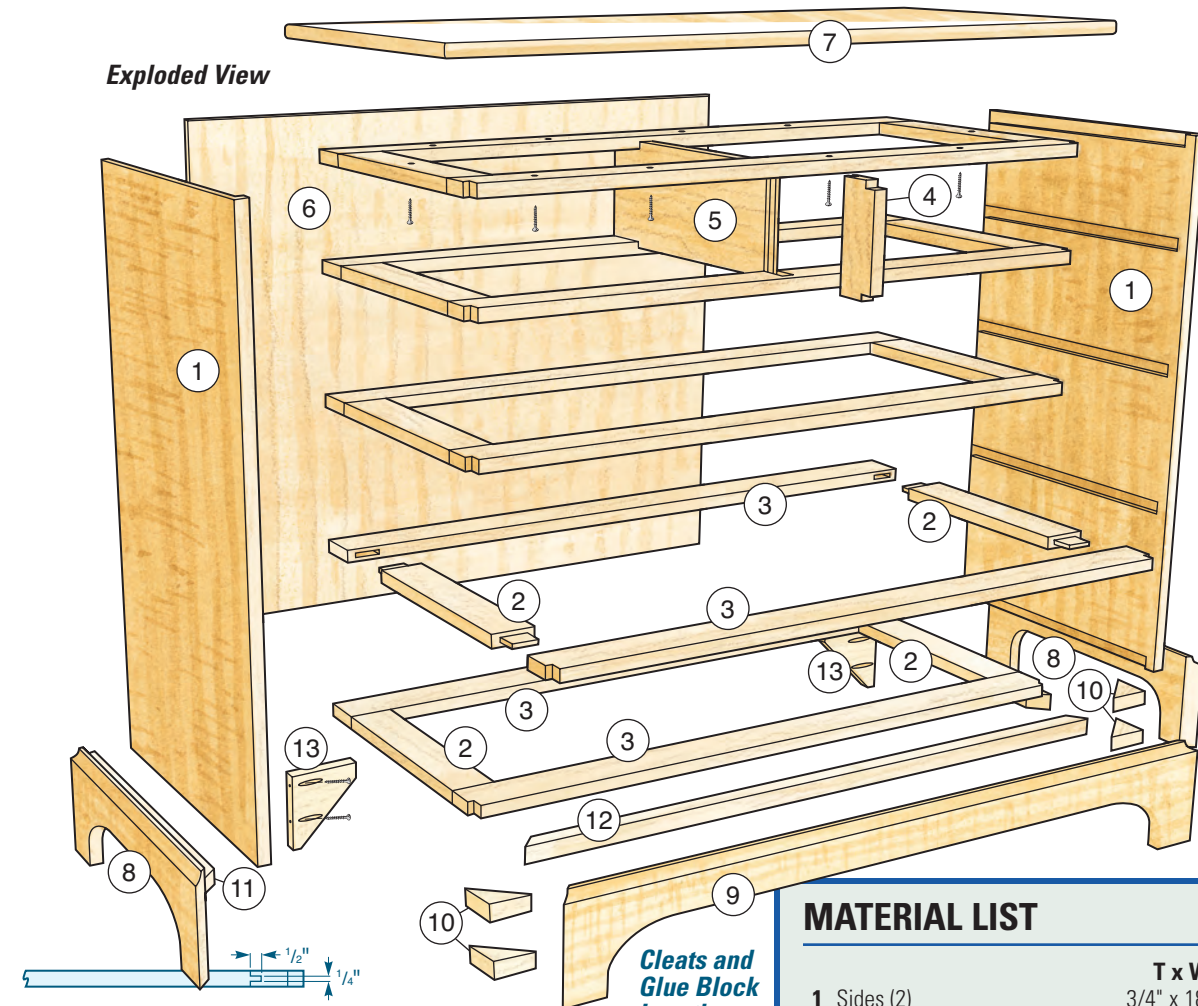
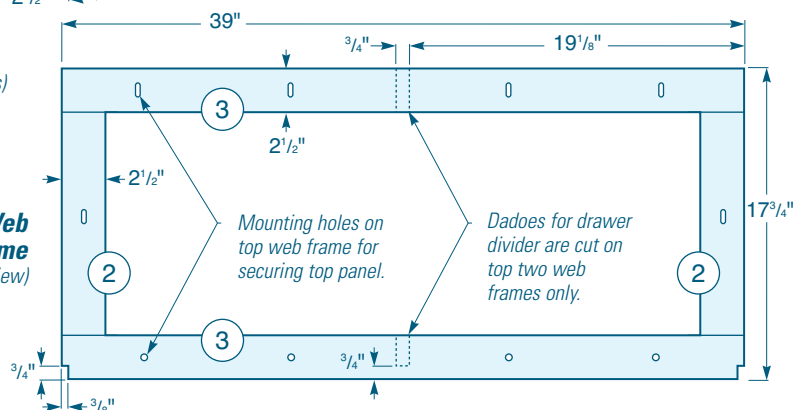


## Exploded View



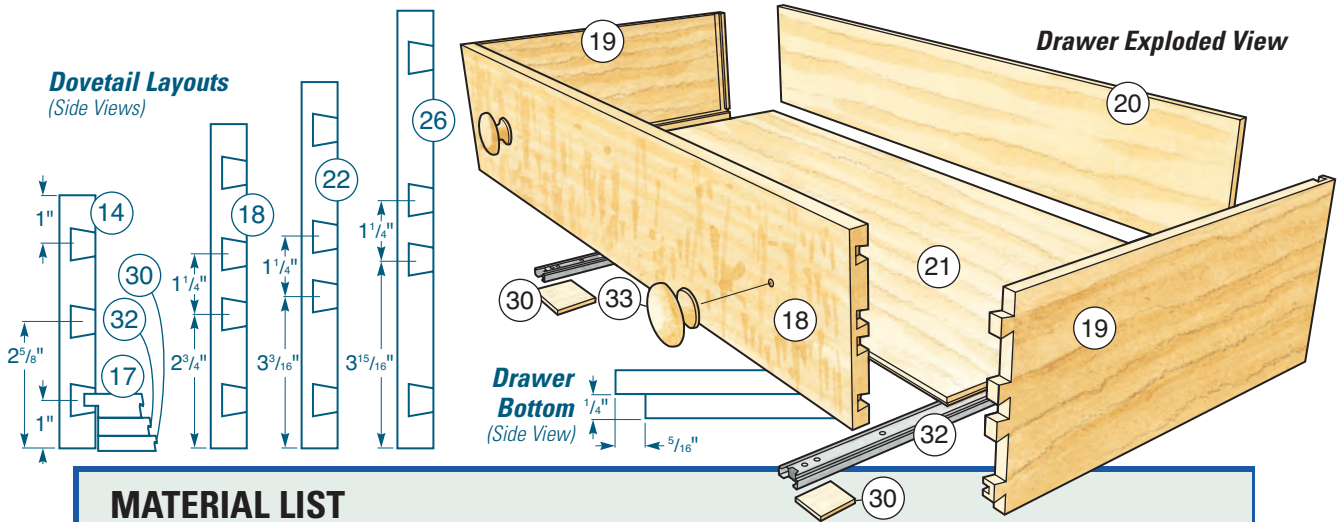
**Base**  
(Front and End Views)

**Top Web Frame**  
(Top View)



## MATERIAL LIST

	T x W x L
1 Sides (2)	3/4" x 18 1/2" x 33"
2 Web Frame Rails (10)	3/4" x 2 1/2" x 15 1/4"
3 Web Frame Stretchers (10)	3/4" x 2 1/2" x 39"
4 Drawer Divider, Front (1)	3/4" x 2 1/2" x 6 1/8"
5 Drawer Divider, Back (1)	3/4" x 6 1/8" x 15 3/4"
6 Back Panel (1)	1/2" x 33" x 39"
7 Top (1)	3/4" x 19" x 42"
8 Base Sides (2)	3/4" x 6" x 19 1/4"
9 Base Front (1)	3/4" x 6" x 41 1/4"
10 Glue Blocks (4)	3/4" x 1 1/4" x 1 1/4"
11 Side Cleats (2)	1" x 1" x 17 1/4"
12 Front Cleat (1)	1" x 1" x 39 3/4"
13 Rear Support Blocks (2)	3/4" x 4 3/4" x 4 3/4"



## MATERIAL LIST

	T x W x L		T x W x L
<b>14</b> Top Drawer Faces (2)	3/4" x 5 1/4" x 18 5/8"	<b>24</b> Third Drawer Back (1)	1/2" x 6 1/2" x 37 5/8"
<b>15</b> Top Drawer Sides (4)	1/2" x 5 1/4" x 17"	<b>25</b> Third Drawer Bottom (1)	1/2" x 16 3/4" x 37 5/8"
<b>16</b> Top Drawer Backs (2)	1/2" x 4 7/8" x 18 5/8"	<b>26</b> Bottom Drawer Face (1)	3/4" x 9 1/8" x 38 1/8"
<b>17</b> Top Drawer Bottoms (2)	1/2" x 16 3/4" x 18 1/8"	<b>27</b> Bottom Drawer Sides (2)	1/2" x 9 1/8" x 17"
<b>18</b> Second Drawer Face (1)	3/4" x 6 3/4" x 38 5/8"	<b>28</b> Bottom Drawer Back (1)	1/2" x 8" x 37 5/8"
<b>19</b> Second Drawer Sides (2)	1/2" x 6 3/4" x 17"	<b>29</b> Bottom Drawer Bottom (1)	1/2" x 16 3/4" x 37 5/8"
<b>20</b> Second Drawer Back (1)	1/2" x 5 5/8" x 37 5/8"	<b>30</b> Front Shims (10)	5/16" x 2" x 1 5/8"
<b>21</b> Second Drawer Bottom (1)	1/2" x 16 3/4" x 37 5/8"	<b>31</b> Rear Shims (10)	5/16" x 2" x 2 1/2"
<b>22</b> Third Drawer Face (1)	3/4" x 7 5/8" x 38 5/8"	<b>32</b> Drawer Slides* (10)	17" Accuride 1029
<b>23</b> Third Drawer Sides (2)	1/2" x 7 5/8" x 17"	<b>33</b> Drawer Knobs (8)	2" Dia.

\*Purchase the drawer slides at [woodworkersjournal.com](http://woodworkersjournal.com) or by calling 800-610-0883. Accuride Slides # 32557 (10 req.); \$8.99 each; code #WF061