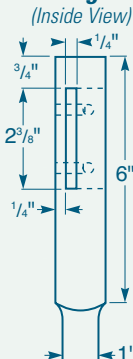
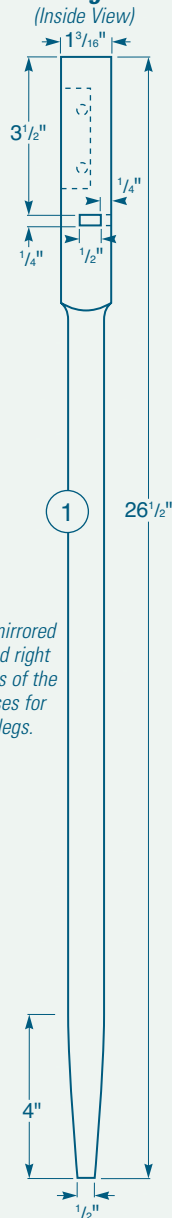


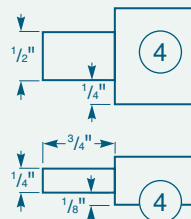
Right Back Leg
(Inside View)



Right Front Leg
(Inside View)

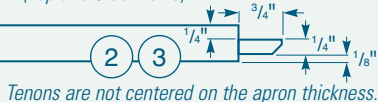


Stretcher
(Top and Front Views)



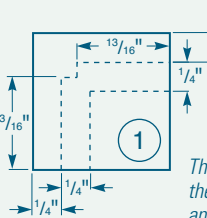
Aprons

(Top and Side Views)



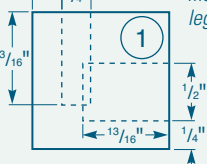
A slight miter is formed on the tenons that go into the back legs so they won't run into each other.

Leg - Back Mortises
(Top View)



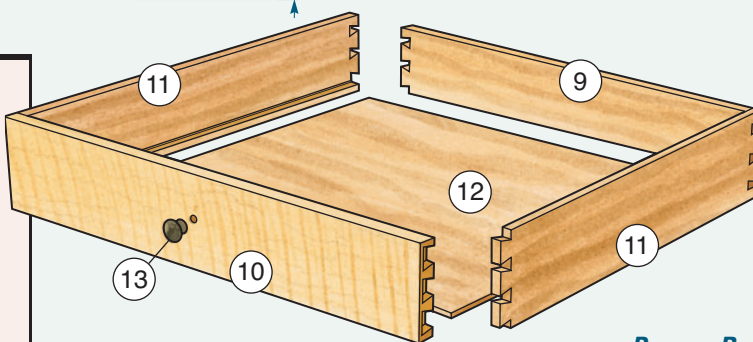
The difference between the legs at the front and back of the table are the mortises. The mortises on the back legs intersect slightly.

Leg - Front Mortises
(Top View)

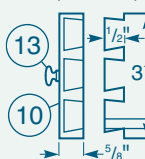


MATERIAL LIST

	T x W x L
1 Legs (4)	1 3/16" x 1 3/16" x 26 1/2"
2 Side Aprons (2)	5/8" x 3 3/8" x 15 1/2"
3 Back Apron (1)	5/8" x 3 3/8" x 17 3/8"
4 Stretcher (1)	1/2" x 1" x 17 3/8"
5 Drawer Supports (2)	1/2" x 1" x 13 3/8"
6 Tabletop Cleats (2)	9/16" x 9/16" x 13 3/8"
7 Tabletop (1)	1/2" x 16 5/16" x 19 3/16"
8 Tenon Pins (14)	1/4"-diameter x 5/8"
9 Drawer Back (1)	5/8" x 2 7/8" x 15 1/2"
10 Drawer Front (1)	5/8" x 3 3/4" x 13 3/8"
11 Drawer Sides (2)	3/8" x 3 3/4" x 15"
12 Drawer Bottom (1)	1/4" x 15 1/4" x 14 3/4"
13 Drawer Pull (1)	5/8" diameter



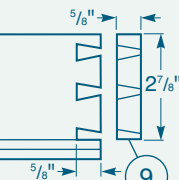
Drawer Front
(End View)



Drawer Side
(Inside View)



Drawer Back
(End View)



The dovetail pattern shown is a suggested layout. Yours may vary with your method.