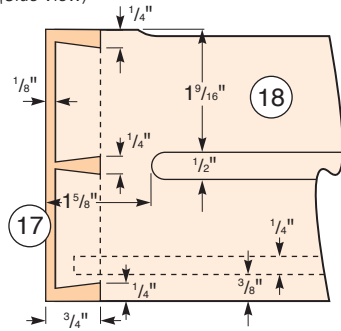


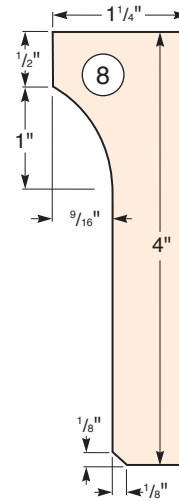
Spade Bookcase

January/February 2017

Drawer Assembly
(Side View)

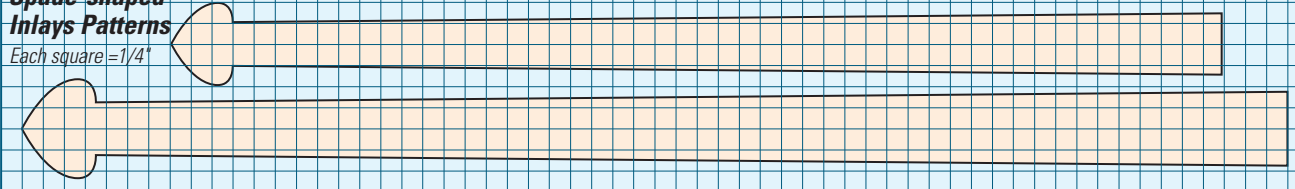


Corbel
(Side View)



**Spade-shaped
Inlays Patterns**

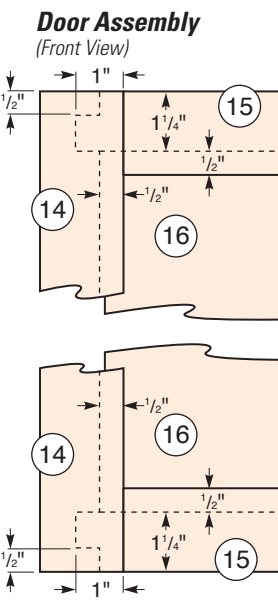
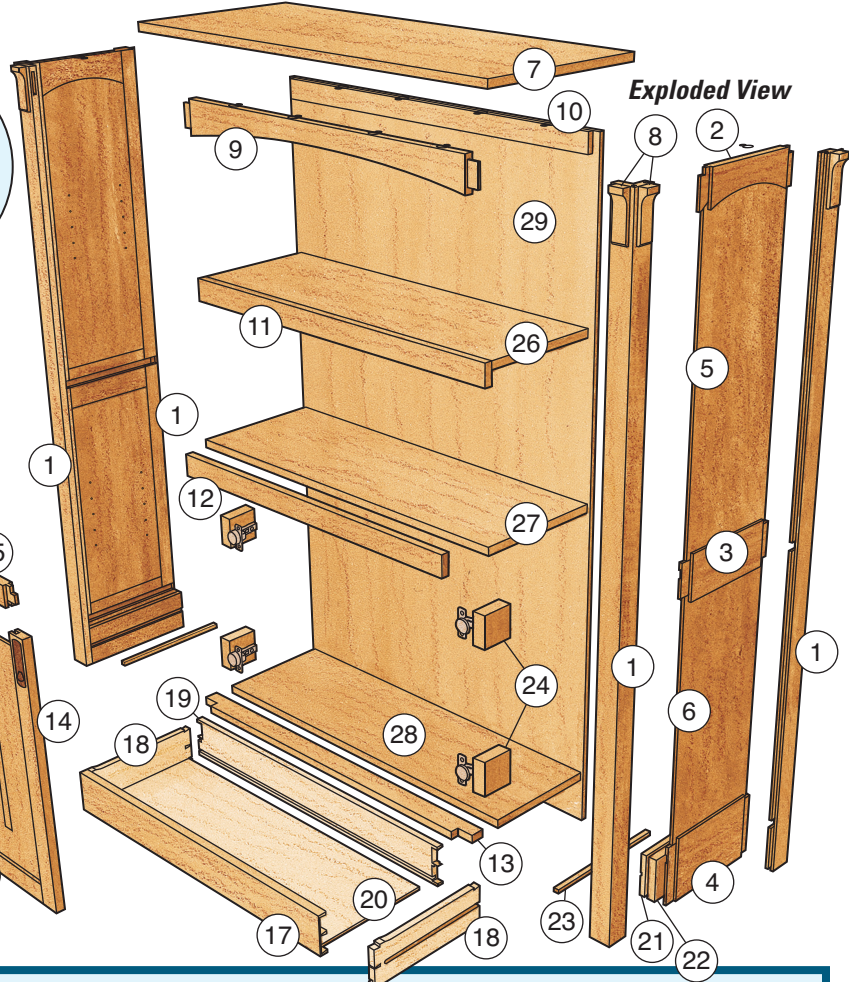
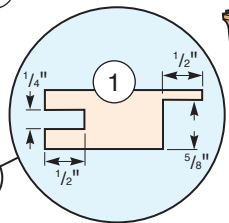
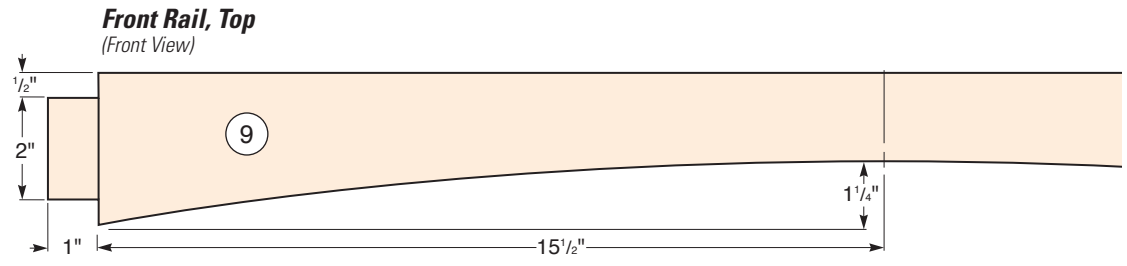
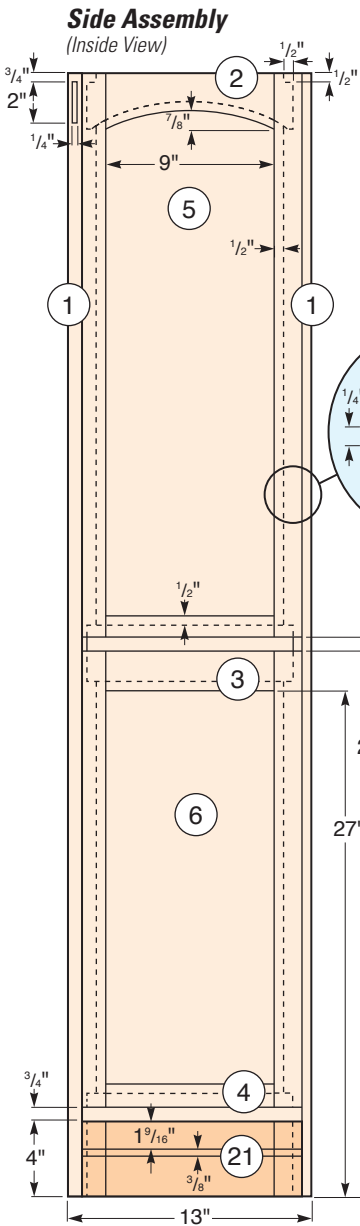
Each square = 1/4"



Bookcase Hard-to-Find Hardware

105° Clip Top Statuary Bronze Inset Hinges (2) #37793 \$11.99 pr.
Desk Top Fasteners (2) #21650 \$5.49 pk.

To purchase this and other products online,
visit www.woodworkersjournal.com/hardware
Or, call 800-610-0883 (code WJ1577).



MATERIAL LIST	
	T x W x L
1 Legs (6)	3/4" x 2" x 60"
2 Side Rails, Upper (2)	3/4" x 3" x 11"
3 Side Rails, Middle (2)	3/4" x 4" x 11"
4 Side Rails, Lower (2)	3/4" x 6" x 11"
5 Side Panels, Upper (2)	1/2" x 10" x 28"
6 Side Panels, Lower (2)	1/2" x 10" x 22"
7 Top Panel (1)	3/4" x 15 3/4" x 38 1/2"
8 Corbels (6)	1 1/4" x 1 1/4" x 4"
9 Front Rail, Top (1)	3/4" x 3" x 33"
10 Rear Rail, Top (1)	1/4" x 1 3/4" x 33 1/2"
11 Shelf Edging, Adjustable (2)	3/4" x 2" x 33 1/2"
12 Shelf Edging, Upper Fixed (1)	3/4" x 2" x 31"
13 Shelf Edging, Lower Fixed (1)	23/32" x 2" x 34 1/4"
14 Door Stiles (4)	3/4" x 1 3/4" x 23 5/8"
15 Door Rails (4)	3/4" x 1 3/4" x 14"
16 Door Panels (2)	1/2" x 13" x 20 5/8"
17 Drawer Front (1)	3/4" x 3 3/4" x 31"
18 Drawer Sides (2)	5/8" x 3 3/4" x 11 1/2"
19 Drawer Back (1)	5/8" x 3 3/4" x 31"
20 Drawer Bottom (1)	1/4" x 10 5/8" x 30 1/4"
21 Thin Drawer Slide Blocking (2)	1/2" x 4" x 11 3/4"
22 Thick Drawer Slide Blocking (2)	3/4" x 4" x 11 3/4"
23 Drawer Slides (2)	3/8" x 1/2" x 11 3/4"
24 Door Hinge Blocking (4)	1 1/4" x 3" x 3"
25 Spade Inlay Blank (1)	3/4" x 6" x 25"
26 Shelf, Adjustable (2)	3/4" x 11" x 33 1/2"
27 Shelf, Upper Fixed (1)	3/4" x 11 3/4" x 34 1/4"
28 Shelf, Lower Fixed (1)	3/4" x 10 1/2" x 34 1/4"
29 Back Panel (1)	1/2" x 34 3/4" x 60"