

WOODWORKER'S JOURNAL

"America's leading woodworking authority"™



Classic Project

In this plan you'll find:

- Step-by-step construction instruction.
- A complete bill of materials.
- Construction drawings and related photos.
- Tips to help you complete the project and become a better woodworker.

Swing-Away Drill Press Organizer

FOR YOUR SHOP

Contributing Editor Dennis Preston came up with this clever little swing-away organizer for the drill press. As shown in the photo, the organizer mounts via a U-bolt directly to the drill press column. The swing arm permits the shelf to be located within arm's reach so bits are close at hand. But, if necessary, the arm and shelf can also be pivoted out of the way. Dennis sized the shelf to hold his most-used bits (mainly Forstner and brad-point bits), but you could increase the shelf size to hold other accessories, too. The 3 in. U-bolt shown will enable the organizer to mount to any drill press column that's 3 in. or less in diameter.

As shown, the organizer was built mainly from oak scrap, but just about any hardwood, or even plywood, will be fine. However, if you do use plywood, you'll still need a piece of solid stock for the arm (D).

Your scrap box should probably yield most of the organizer's parts. Although we show 1/2 in. thick stock for the brackets (A), bracket mount (B), shelf back and bottom (E, F), and 1/4 in. thick stock for the shelf sides (G), if you only have 1/4 in. thick scraps available, they would be fine too. Just adjust the sizes of the other parts to fit. Cut the brackets to size, then clamp all four together in a stack and drill through for the bolts (I).

U-bolt shown will enable the organizer to mount to any drill press column that's 3 in. or less in diameter.

Also cut the arm to size, and drill through both ends using the same size bit as for the brackets. Round the arm ends as shown.

Now cut the shelf parts to size, and assemble them with glue and finishing nails. No clamps are needed. Add the 1/4 in. by 1/4 in. lip (H) at the shelf front to keep the bit blocks from sliding out. The two brackets at the shelf back are also fastened in place with glue and finishing nails, as are the remaining two brackets and the bracket mount. An easy way to get the two brackets to line up is to sandwich them around the arm, and then hold the assembly together by adding the bolt and tightening the wing nut (J). Of course, if you have a long enough drill bit you can also just assemble everything first and then drill the bolt

SIDE VIEW

The Woodworker's Journal

Get Adobe Reader To download these plans, you will need **Adobe Reader** installed on your computer. If you want to get a free copy, visit: <http://adobe.com/reader>.

Having trouble downloading the plans? Right click on the download link and select "Save Target As..." or "Save Link As..." (depending on the web browser you are using) to download to your local drive.

Copyright Woodworker's Journal © 2011
This pattern is copyrighted by Woodworker's Journal. Purchasers of this plan may make three copies for personal use in the shop. The pattern itself, however, is the property of Woodworker's Journal and is not to be reproduced for distribution or resale. Doing so, including via any electronic methods, is a violation of copyright law.

Published in *Woodworker's Journal* May/June 1992

www.woodworkersjournal.com

\$1.00
WJC126

holes through the brackets and arm.

The two beveled cleats (C) serve to center the assembly on the drill press column. Drill through the bracket mount for the U-bolt (K), then glue the cleats in position. A coat of spray lacquer, or just about any other finish, will add a little protection to the organizer and make dusting easier.

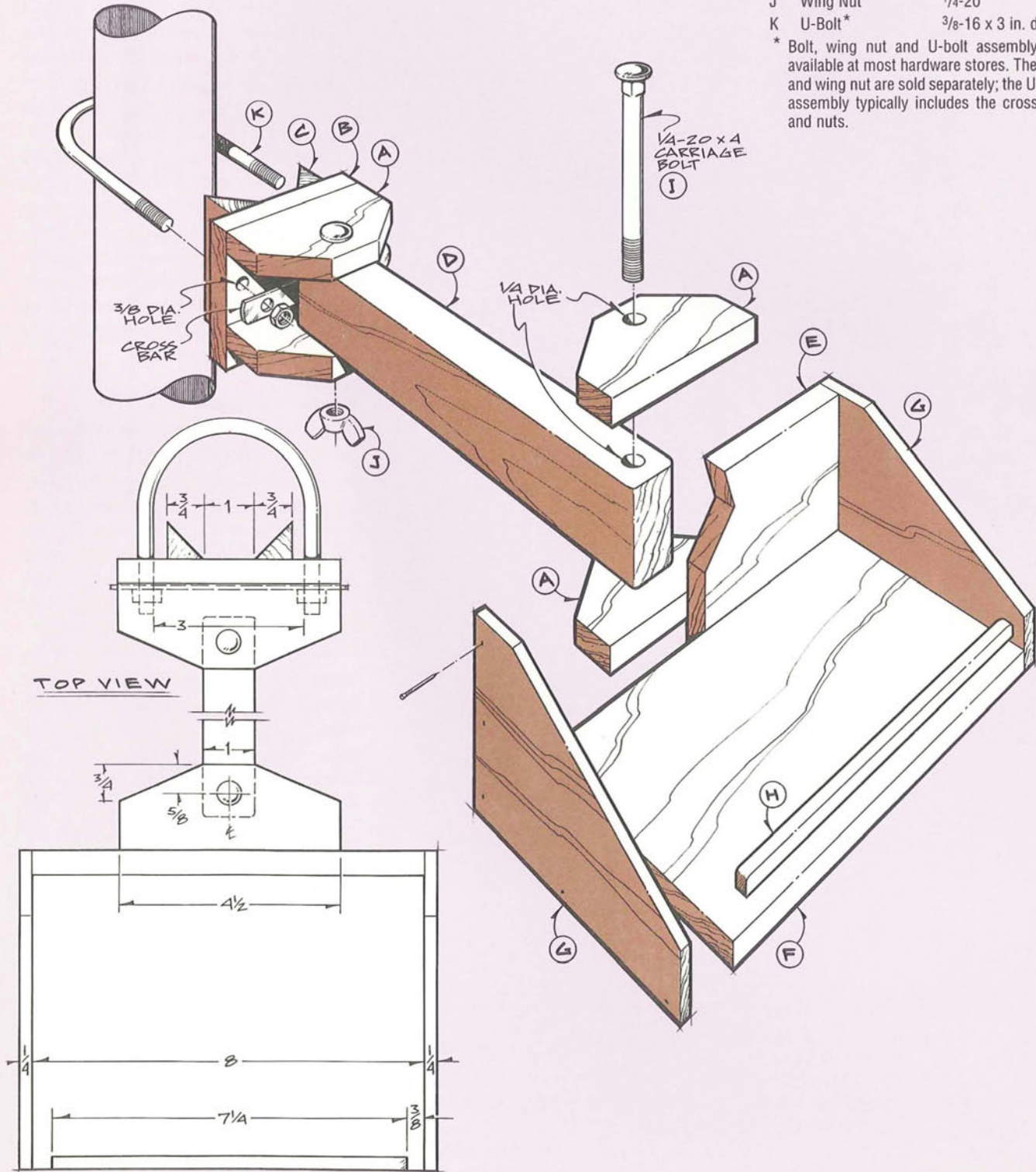
As photographed, we're using two blocks of wood to hold the various drill bits. The back block is higher, which

eases access to the bits in back. The most used bits—in this case the brad-points—are at the front. However, depending on your bit collection, and any drill indexes you may already own, you'll probably want to customize these blocks to best suit your own needs. If your drill press doesn't have a handy place to keep the chuck key, just drill a hole into one of the blocks, as shown in the photo, to place the chuck key within arm's reach.

Bill of Materials (all dimensions actual)

Part	Description	Size	No. Req'd.
A	Bracket	1/2 x 1 3/4 x 4 1/2	4
B	Bracket Mount	1/2 x 4 x 4 1/2	1
C	Beveled Cleat	3/4 x 3/4 x 4	2
D	Arm	1 x 2 1/2 x 8	1
E	Shelf Back	1/2 x 4 x 8	1
F	Shelf Bottom	1/2 x 6 x 8	1
G	Shelf Side	1/4 x 4 x 6 1/2	1
H	Lip	1/4 x 1/4 x 7 1/4	1
I	Bolt*	1/4-20 x 4 in. long	2
J	Wing Nut*	1/4-20	2
K	U-Bolt*	3/8-16 x 3 in. dia.	1

* Bolt, wing nut and U-bolt assembly are available at most hardware stores. The bolt and wing nut are sold separately; the U-bolt assembly typically includes the cross bar and nuts.



WOODWORKER'S WJOURNAL

Thank you for purchasing this *Woodworker's Journal* Classic Project plan.

Woodworker's Journal Classic Projects are scans of much-loved woodworking plans from our library of back issues. Please note that specific products and sources cited in a plan when it originally appeared may no longer be available.

If you experience any problems with this plan, please contact: info@woodworkersjournal.com

or

Attn: Classic Projects
Woodworker's Journal
4365 Willow Drive
Medina, MN 55340

Thank you again for your purchase, and happy woodworking!

Matt Becker
Internet Production Coordinator