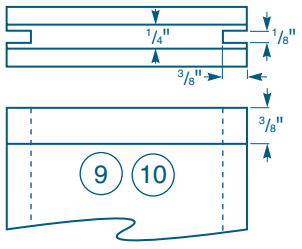


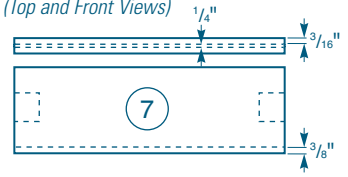
Dovetailed Rail
(Front and Top Views)

Back Slats
(Top and Front Views)

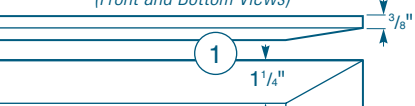
Instead of a typical single panel, the back slats fill in the area enclosed by the frame. Leave at least 1/16" gap between the slats.



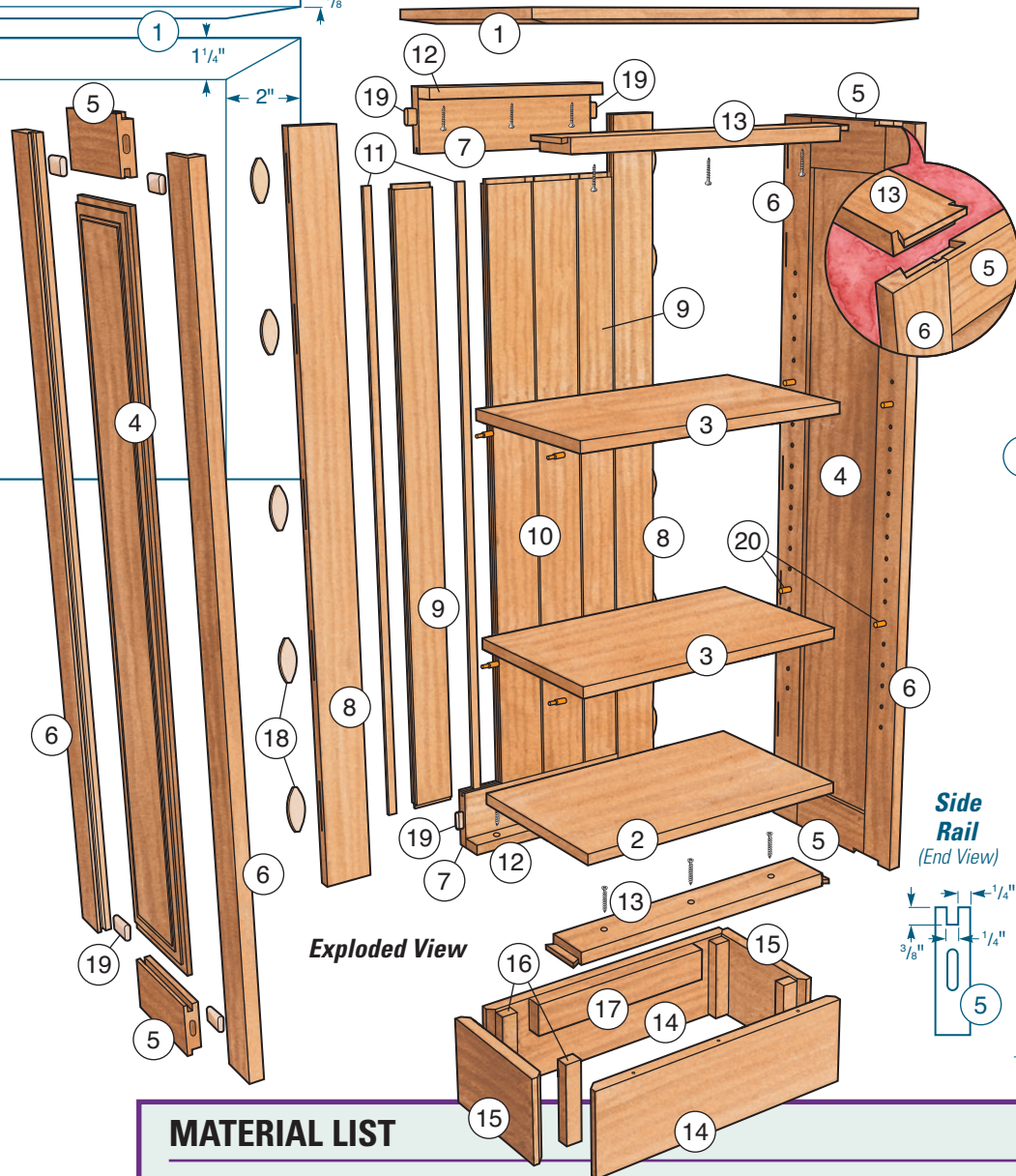
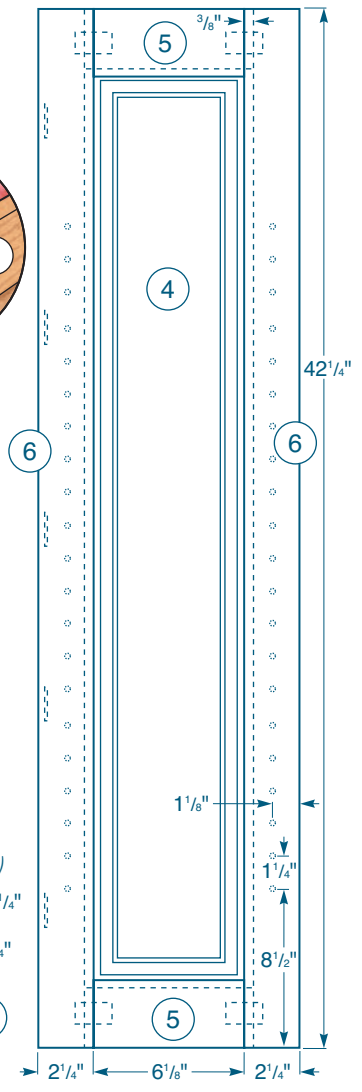
Back Rails
(Top and Front Views)



Top
(Front and Bottom Views)

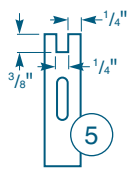


Bookcase Side
(Front View)



Exploded View

Side Rail
(End View)



MATERIAL LIST

	T x W x L		T x W x L
1 Top (1)	5/8" x 11 7/8" x 23"	11 Back Splines (5)	1/8" x 1/2" x 35 3/4"
2 Bottom (1)	5/8" x 10" x 16 1/2"	12 Back Ledgers (2)	5/8" x 1 1/4" x 11"
3 Shelves (2)	5/8" x 9 3/4" x 16 1/2"	13 Dovetailed Rails (2)	3/4" x 2 5/8" x 17 1/2"
4 Side Panels (2)	1/2" x 6 3/4" x 37 3/8"	14 Base Front and Back (2)	3/4" x 5 1/4" x 17"
5 Side Rails (4)	3/4" x 2 3/4" x 6 7/8"	15 Base Sides (2)	3/4" x 5 1/4" x 8"
6 Side Stiles (4)	3/4" x 2 1/4" x 42 1/4"	16 Base Glue Blocks (4)	3/4" x 1" x 5"
7 Back Rails (2)	5/8" x 3 1/2" x 11"	17 Base Ledger (1)	1" x 2" x 11 3/4"
8 Back Stiles (2)	5/8" x 2 3/4" x 42 1/4"	18 Biscuits (10)	#20
9 Back Outer Slats (2)	5/8" x 2 1/2" x 36"	19 Domino Tenons (12)	#8 x 40
10 Back Inner Slats (2)	5/8" x 2 3/4" x 36"	20 Shelf Supports (8)	5mm

Base
(Top View)

