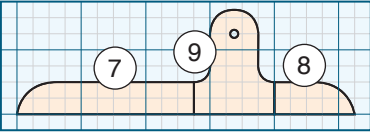


Music Holder Bracket

(Gridded Drawing)

Each square = 1/2"

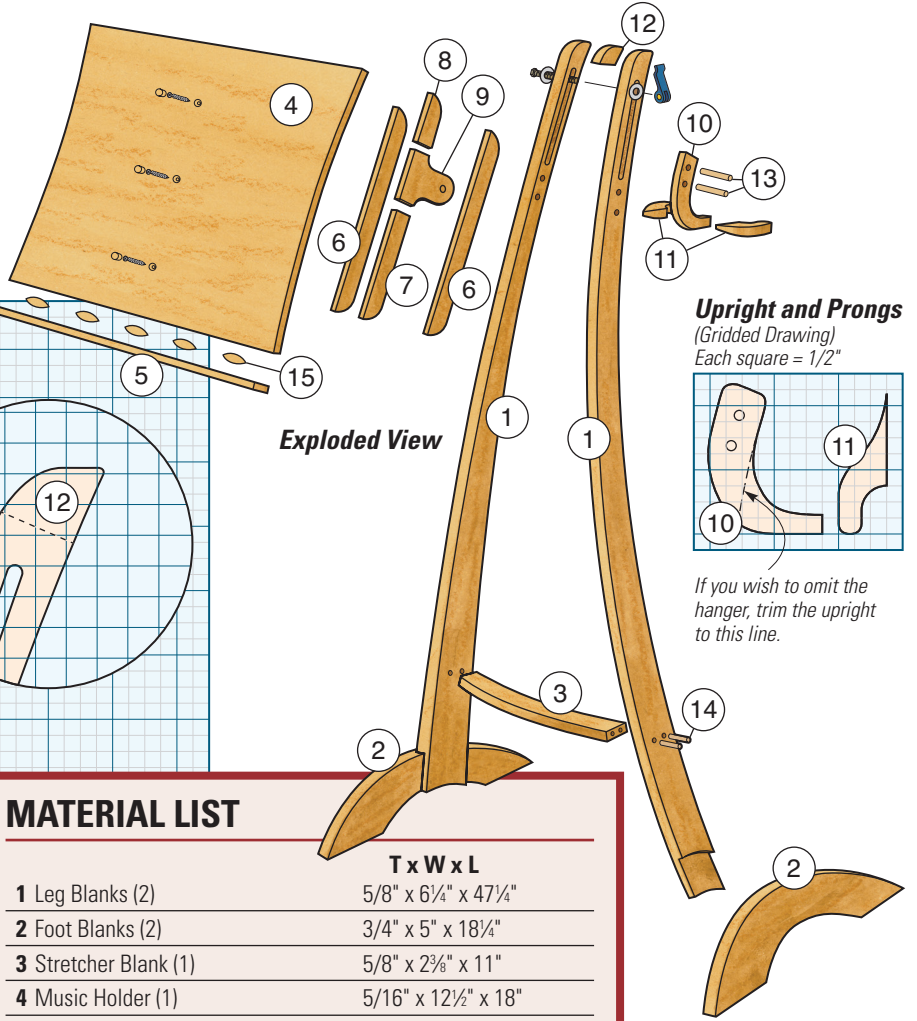
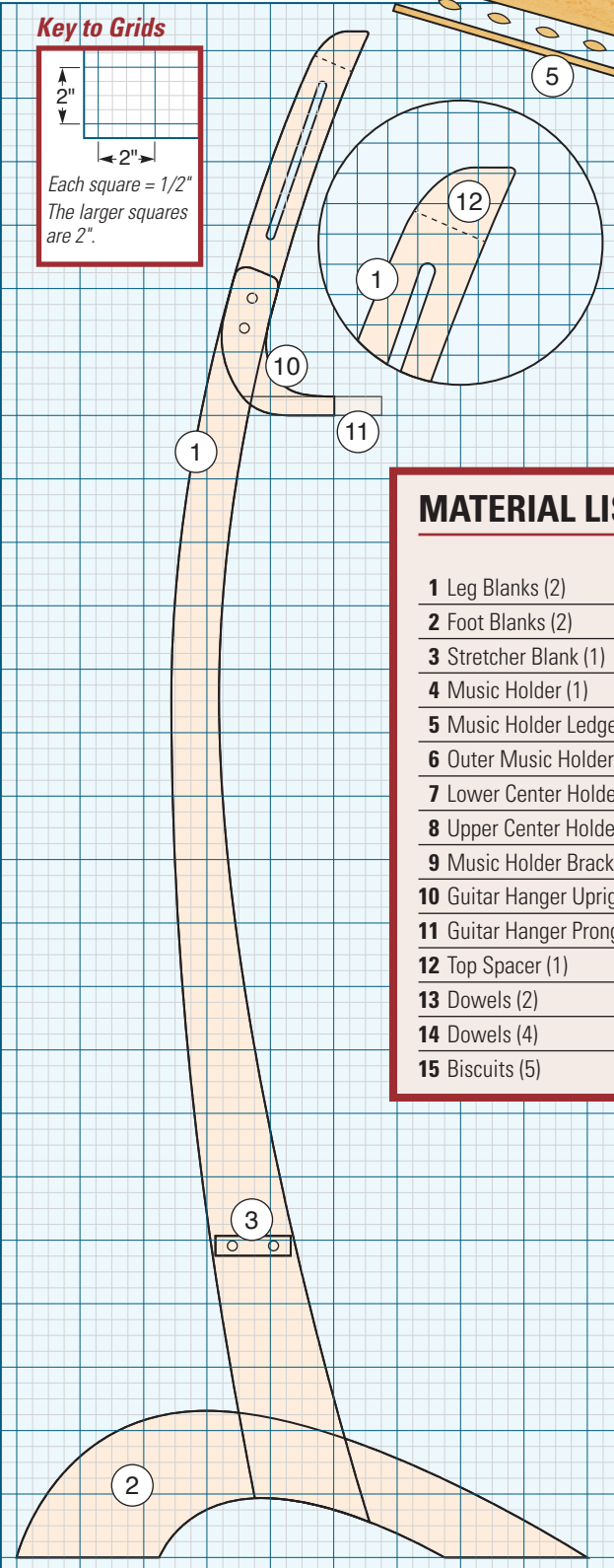
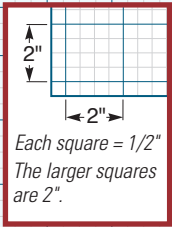


Music Stand

(Gridded Drawing)

Each square = 1/2"

Key to Grids

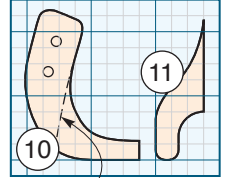


Exploded View

Upright and Prongs

(Gridded Drawing)

Each square = 1/2"

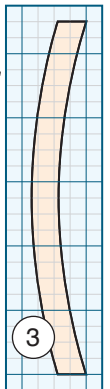


If you wish to omit the hanger, trim the upright to this line.

Stretcher

(Gridded Drawing)

Each square = 1/2"



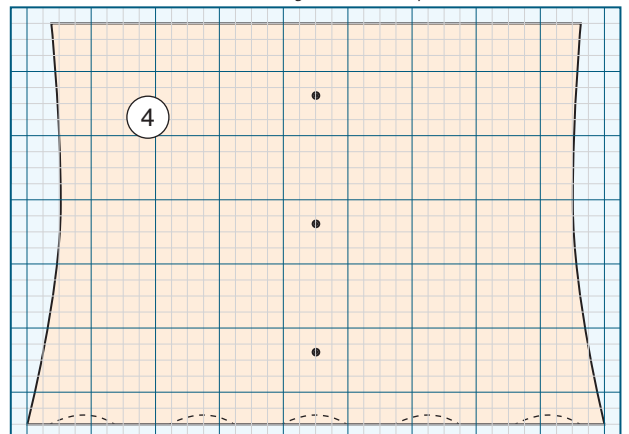
MATERIAL LIST

	T x W x L
1 Leg Blanks (2)	5/8" x 6 1/4" x 47 1/4"
2 Foot Blanks (2)	3/4" x 5" x 18 1/4"
3 Stretcher Blank (1)	5/8" x 2 3/8" x 11"
4 Music Holder (1)	5/16" x 12 1/2" x 18"
5 Music Holder Ledge (1)	5/16" x 2" x 18"
6 Outer Music Holder Brackets (2)	5/16" x 1" x 10 1/2"
7 Lower Center Holder Bracket (1)	3/8" x 1" x 5 1/2"
8 Upper Center Holder Bracket (1)	3/8" x 1" x 2 1/2"
9 Music Holder Bracket Arm (1)	3/8" x 2 1/2" x 3 1/4"
10 Guitar Hanger Upright (1)	25/64" x 3 1/2" x 4 3/8"
11 Guitar Hanger Prongs (2)	9/16" x 1 1/2" x 4 3/8"
12 Top Spacer (1)	25/64" x 1 5/16" x 1 5/16"
13 Dowels (2)	5/16" x 2 1/4"
14 Dowels (4)	5/16" x 1 1/2"
15 Biscuits (5)	#0

Music Holder

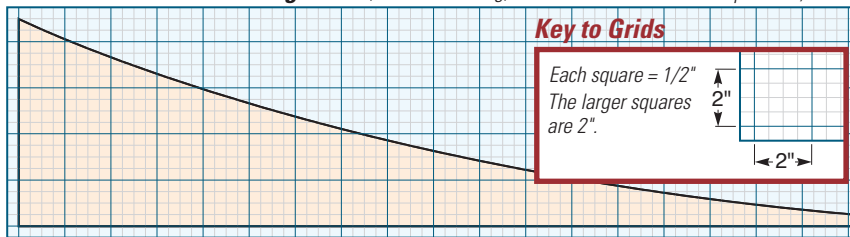
(Gridded Drawing)

Each square = 1/2"



Bending Form (Gridded Drawing)

Each square = 1/2"



The drawing above shows the shape of one of the 36¹/₄"-long, 9"-high segments that make up the bending form. You'll need to cut out seven of these to properly build the form.